

**STANLEY®**



CONTINUOUS HINGES: STEEL & STAINLESS STEEL CONTINUOUS BARREL TYPE

# Continuous Hinges

**STEEL & STAINLESS STEEL CONTINUOUS BARREL TYPE**

dormakaba 

Trusted experts. Proven reliability. Simply STANLEY.

# TABLE OF CONTENTS

600 series continuous hinge design .....3  
 Full mortise.....7  
 Full mortise with adjustable full-wrap edge guard .....9  
 Full mortise with half-wrap edge guard.....9  
 Half mortise.....13  
 Half mortise with half-wrap edge guard .....14

Half mortise swing clear with  
 half-wrap edge guard..... 15  
 Full surface ..... 16  
 Edge guards ..... 17  
 EDP numbers and extras ..... 19

## Architectural Steel And Stainless Steel Barrel Type Continuous Hinges

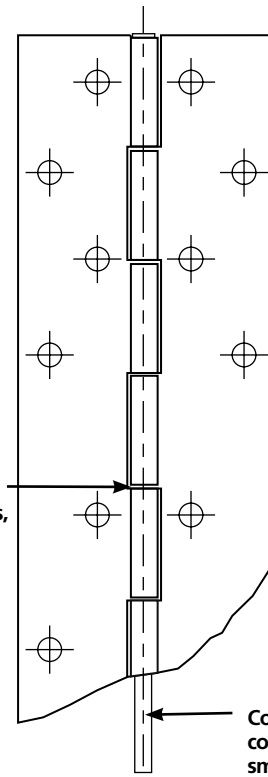
### 640, 650, and 650HD Series Continuous Hinges

Resembling a piano- type pinned hinge, high performance mild steel, and 304 series stainless steel continuous hinges designed to withstand the most-punishing day-in-day-out use.

In high use and high abuse openings, safe and reliable door operation depends on the smooth performance of the hinge system. A continuous hinge ensures complete alignment between the door and frame, resulting in smooth, maintenance free operation in the most demanding conditions.

- Tougher than typical nylon, Nylatron® bearings contain solid lubricants that contribute to low dynamic and static coefficient of friction and when combined with elements that complete its chemical and physical make up result in low abrasion resistance and longer life
- Superior bearing assembly design inhibits dirt collection
- Two stainless steel bearings, top and bottom, prevent door sagging if Nylatron® bearings degrade during a fire
- BHMA certified
- Conforms to ANSI/BHMA Standard A156.26–2006, Grade 1-300
- Standard duty hinge is made out of 14 gauge material and supports doors weighing up to 600lbs., not exceeding 4' in width.
- Heavy duty hinge is made out of 12 gauge material and supports doors weighing up to 900lbs., not exceeding 4' in width.
- UL and ULC tested and certified to UL10C standard for 4' x 10' single doors and 8' x 10' pairs of doors
- Easily cleaned smooth surfaces prevent accumulation of dust and dirt
- Optional integrated edge guards protect the exposed door edges from damage
- Slim barrel draws minimum attention to the hinge

Except for stainless steel top and bottom bearings, twin Nylatron® bearings are located between all other knuckles



Concealed Teflon coated pin for smooth, quiet operation

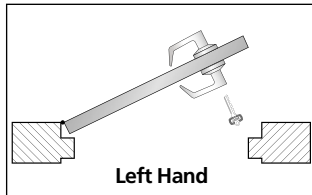


Nylatron® is a registered trademark of Quadrant

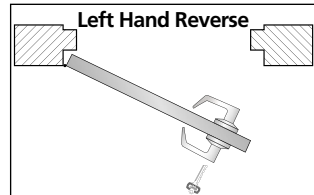
## Architectural Steel And Stainless Steel Barrel Type Continuous Hinges General Information and Options

### How to Determine Hand of Hinge

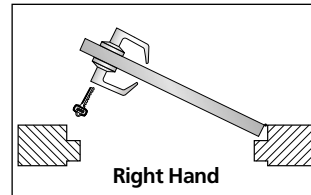
- The hand of a hinge is determined from the outside of the door to which it is applied
- The outside of a cupboard, bookcase or closet door is the room side. For other doors, the outside is usually the side from which security is necessary.



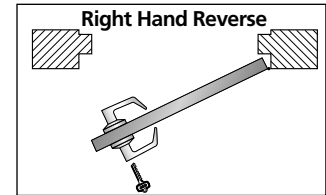
**Left hand door takes left hand hinges**



**Left hand reverse door takes right hand hinges**



**Right hand door takes right hand hinges**



**Right hand reverse door takes left hand hinges**

### CE – (Concealed Electric)

Serviceable removable electric current transfer conducts current regardless of door position. Available option with models: 641, 643, 651, 651HD, 653 and 653HD. Specify hand. Order hinge with CE600, EDP #16-2101. For heavy duty models add SHCE600HD shims to CE600, EDP #47-7726

**Wires:** Wire size – 26 gauge continuous from one side of hinge to the other.  
4 wire application pair the following wires together.

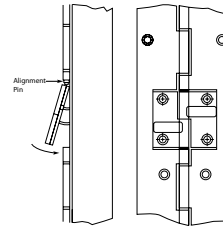
Black & Yellow – Red & Blue

Green & Purple – Brown & White

6 wire application use the Black, Yellow, Red, Blue, Brown & White wires.

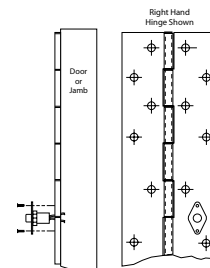
Cut or tie off the Gray & Purple wires.

8 wire applications use all 8 wires.



### CS – (Concealed Switch)

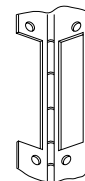
Allows for opening monitoring. Used to activate alarms, monitoring devices, or other security equipment. Specify hand.  
Available on models: 641, 643, 651, and 653.



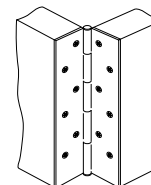
### EPT – (Electric Power Transfer)

Hinge leaves are modified to accept an EPT devise. Specify hand, location, manufacturer and model of EPT.

Available on models: 641, 643, 651, 651HD, 652, 652HD, 653, and 653HD.



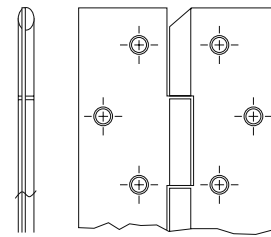
Narrow (Sheared) Leaf for 1 3/8" Thick Doors. Available on models 641 and 651



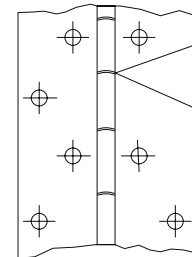
# Architectural Steel And Stainless Steel Barrel Type Continuous Hinges

## General Information and Options

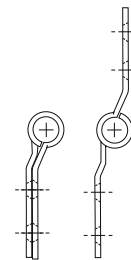
**HT** – (Hospital Tip) Barrel end on hinge top is sloped making cleaning easier and making it difficult to attach ropes, clothing apparel, and other items, thus reducing the risk of harm. Specify hand.



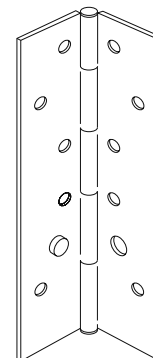
**Dutch Door Prep** – Frame leaf is continuous and door leaf is two piece. Specify cut portion from bottom of hinge, space between leaves, and hand.



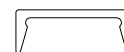
**RB** – (Raised Barrel) For applications where doors are set deep on a wide frame.



**Security Stud** – Full mortise (Edge mount) hinges are available with security studs for added safety. When the door is closed position, a stud attached to one leaf projects into a hole in the matching leaf.



**Aluminum Replacement Covers** – For half and full surface hinges



**Shims** – To correct excessive clearance between doors and frames.



shim

**Fasteners** – Steel through-bolts 1/4" – 20 x 1 3/4" with 1/4" – 20 x 1" philips head machine screws. Packed 16 per pack. EDP #16-1146.

Philips head #10 x 1/2" self drilling screws.

**ADB** – Automatic door bottom prep. A cut out to accommodate an automatic door bottom.

## Sizing Doors and Frames for Standard Duty Steel and Stainless Steel Continuous Hinges\*

Sizing of door width for models: 641, 643, 651, 653

Single Doors			
Square edge door		1/8" in 2" beveled edge door	
Hinge allowance	1/4" (6.4mm)	Hinge allowance	17/64" (6.7mm)
Allowance for frame irregularities	1/32" (0.8mm)	Allowance for frame irregularities	1/32" (.08mm)
Typical lockside clearance	1/8" (3.2mm)	Typical lockside clearance	1/8" (3.2mm)
<b>Total</b>	<b>13/32" (10.4 mm)</b>	<b>Total</b>	<b>27/64" (10.7mm)</b>

Pairs of Doors			
Square edge door		1/8" in 2" beveled edge door	
Allowance for 2 hinges	1/2" (12.7mm)	Allowance for 2 hinge	17/32" (13.5mm)
Allowance for frame irregularities (x2 frames)	1/16" (1.6mm)	Allowance for frame irregularities (x2 frames)	1/16" (1.6mm)
Typical clearance between doors	3/16" (4.8mm)	Typical clearance between doors	3/16" (4.8mm)
<b>Total</b>	<b>3/4" (19.1 mm)</b>	<b>Total</b>	<b>25/32" (19.9 mm)</b>

Sizing of door width for models: 644, 645, 647, 654, 655, 657

Single Doors		Pairs of Doors	
Square or beveled edge		Square or beveled edge	
Hinge allowance	1/8" (3.2mm)	Allowance for 2 hinges	1/4" (6.4mm)
Allowance for frame irregularities	1/32" (0.8mm)	Allowance for frame irregularities (x2 frames)	1/16" (1.6mm)
Typical lockside clearance	1/8" (3.2mm)	Typical clearance between doors	3/16" (4.8mm)
<b>Total</b>	<b>9/32" (6.5mm)</b>	<b>Total</b>	<b>1/2" (12.8mm)</b>

Sizing of door width for models: 646, 656

Single Doors		Pairs of Doors	
Square or beveled edge		Square or beveled edge	
Hinge allowance	5/32" (4.0mm)	Allowance for 2 hinges	5/16" (8.0mm)
Allowance for frame irregularities	1/32" (0.8mm)	Allowance for frame irregularities (x2 frames)	1/16" (1.6mm)
Typical lockside clearance	1/8" (3.2mm)	Typical clearance between doors	3/16" (4.8mm)
<b>Total</b>	<b>5/16" (8.0 mm)</b>	<b>Total</b>	<b>19/16" (14.4 mm)</b>

Sizing of door width for model 652

Single Doors		Pairs of Doors	
Square or beveled edge		Square or beveled edge	
Hinge allowance	5/16" (8.0mm)	Allowance for 2 hinges	5/8" (16.0mm)
Allowance for frame irregularities	1/32" (0.8mm)	Allowance for frame irregularities (x2 frames)	1/16" (1.6mm)
Typical lockside clearance	1/8" (3.2mm)	Typical clearance between doors	3/16" (4.8mm)
<b>Total</b>	<b>15/32" (8.0 mm)</b>	<b>Total</b>	<b>7/8" (22.4 mm)</b>



\*Please be advised that the suggested clearances outlined here are for typical applications. Individual application may differ. Please also note that: Beveled edge doors are measured on the high side. Recommended head clearance for all models is 1/8".

# Sizing Doors and Frames for Standard Duty Steel and Stainless Steel Continuous Hinges\*

## Sizing of door width for model 651HD

Single Doors			
Square edge door		1/8" in 2" beveled edge door	
Hinge allowance	5/16" (7.9mm)	Hinge allowance	11/32" (8.7mm)
Allowance for frame irregularities	1/32" (0.8mm)	Allowance for frame irregularities	1/32" (0.8mm)
Typical lockside clearance	1/8" (3.2mm)	Typical lockside clearance	1/8" (3.2mm)
<b>Total</b>	<b>15/32" (11.9 mm)</b>	<b>Total</b>	<b>1/2" (12.7mm)</b>

Pairs of Doors			
Square edge door		1/8" in 2" beveled edge door	
Allowance for 2 hinges	5/8" (15.9mm)	Allowance for 2 hinges	11/16" (17.5mm)
Allowance for frame irregularities (x2 frames)	1/16" (1.6mm)	Allowance for frame irregularities (x2 frames)	1/16" (1.6mm)
Typical clearance between doors	3/16" (4.8mm)	Typical clearance between doors	3/16" (4.8mm)
<b>Total</b>	<b>7/8" (22.2mm)</b>	<b>Total</b>	<b>15/16" (23.9mm)</b>

## Sizing of door width for model 652HD

Single Doors		Pairs of Doors	
Square or beveled edge		Square or beveled edge	
Hinge allowance	3/8" (9.5mm)	Allowance for 2 hinges	3/4" (19.0mm)
Allowance for frame irregularities	1/32" (0.8mm)	Allowance for frame irregularities (x2 frames)	1/16" (1.6mm)
Typical lockside clearance	1/8" (3.2mm)	Typical clearance between doors	3/16" (4.8mm)
<b>Total</b>	<b>17/32" (13.5mm)</b>	<b>Total</b>	<b>1.0" (25.4mm)</b>

## Sizing of door width for models 653HD

Single Doors			
Square edge door		1/8" in 2" beveled edge door	
Hinge allowance	5/16" (7.9mm)	Hinge allowance	11/32" (8.7mm)
Allowance for frame irregularities	1/32" (0.8mm)	Allowance for frame irregularities	1/32" (0.8mm)
Typical lockside clearance	1/8" (3.2mm)	Typical lockside clearance	1/8" (3.2mm)
<b>Total</b>	<b>15/32" (11.9 mm)</b>	<b>Total</b>	<b>1/2" (12.7mm)</b>

Pairs of Doors			
Square edge		1/8" in 2" beveled edge door	
Allowance for 2 hinges	5/8" (15.9mm)	Allowance for 2 hinges	11/16" (17.5mm)
Allowance for frame irregularities (x2 frames)	1/16" (1.6mm)	Allowance for frame irregularities (x2 frames)	1/16" (1.6mm)
Typical clearance between doors	3/16" (4.8mm)	Typical clearance between doors	3/16" (4.8mm)
<b>Total</b>	<b>7/8" (22.2mm)</b>	<b>Total</b>	<b>15/16" (23.9mm)</b>



\*Please be advised that the suggested clearances outlined here are for typical applications. Individual application may differ. Please also note that: Beveled edge doors are measured on the high side. Recommended head clearance for all models is 1/8".

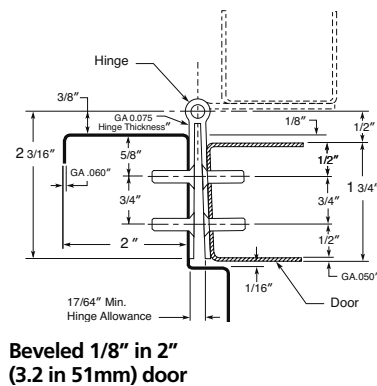
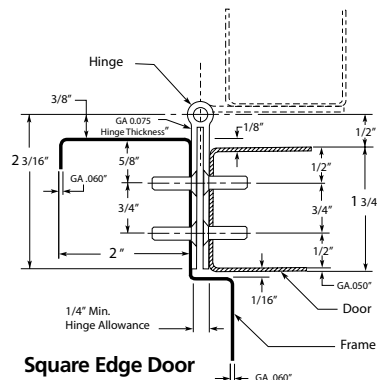
## Architectural Steel And Stainless Steel Barrel Type Continuous Hinges Full Mortise

**641** – (ANSI A81011B & A81021B) – Standard duty, steel for 1/8" inset doors

**651** – (ANSI A51011B & A51021B) – Standard duty, stainless steel for 1/8" inset doors



- BHMA certified
- Conforms to ANSI/BHMA Standard A156.26–2006, Grade 1-300
- Supports doors up to 600 lbs.
- Distributes door weight and stress along the full length of door and frame
- No misaligned pivot points of individual hinges
- Hinge covered by a limited lifetime warranty for the life of the building
- Fire rated for up to and including 3 hours
- Leaves attached to the edge of door and frame, revealing only the slim hinge bevel when door is closed
- Steel hinges supplied prime coated for painting. For other powder coated finishes consult factory
- Stainless steel is available in (32) highly polished, and (32D) satin finish. Consult the factory for black, white and custom powder coated finishes.
- 1/4" diameter teflon coated pins
- Superior bearing design inhibits dirt collection
- Two stainless steel bearings, top and bottom, prevent door sagging if Nylatron bearings degrade during a fire
- Hinges can be furnished as follows:
  - narrow (sheared) leaves for 1 3/8" thick doors
  - with hospital tips (HT)
  - with dutch door prep
  - with electric wires (CE)
  - with electric switches (CS)
  - with electric power transfer (EPT) prep – Specify manufacturer and model number of transfer
  - with raised barrel (RB)
  - custom length
  - with welded pin



Length		Finish		Number of #10 x 1/2" Self Drilling Screws Per Hinge	Number of #10 x 1" Wood Screws Per Hinge	Quantity Per Carton	Carton Weight	
Feet	(mm)	641	651				Lbs.	(Kg)
6' 8"	(2032)	P	32D	40	20	1	14	(6.4)
7' 0"	(2134)	P	32D	42	21	1	14	(6.4)
7' 2"	(2184)	P	32D	42	21	1	14	(6.4)
8' 0"	(2286)	P	32D	46	23	1	16	(7.3)
10' 0"	(3048)	P	32D	54	27	1	20	(9.1)

Machine screws available separately

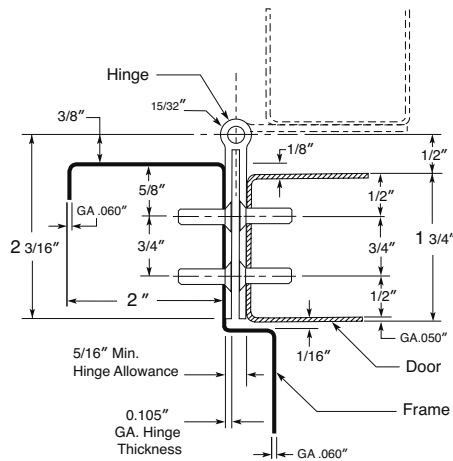
# Architectural Steel And Stainless Steel Barrel Type Continuous Hinges

## Full Mortise

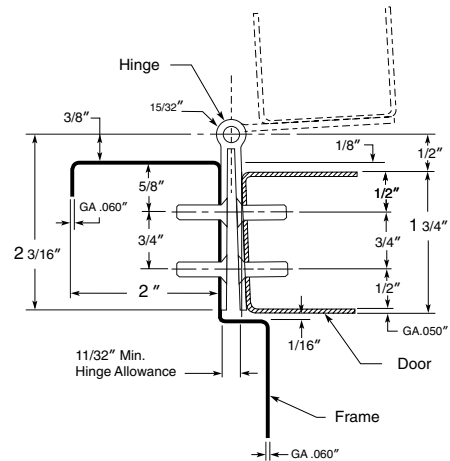
651HD – (ANSI A51011B & A51021B) – Heavy duty 12 gauge stainless steel for 1/8" inset doors.



- Suitable for healthcare and correctional facilities where high use and/or abuse is expected
- Supports doors up to 900 lbs. 4' maximum door width
- BHMA certified
- Conforms to ANSI/BHMA Standard A156.26–2006, Grade 1-300
- Distributes door weight and stress along the full length of door and frame
- No misaligned pivot points of individual hinges
- Hinge covered by a limited lifetime warranty for the life of the building
- Fire rated for up to and including 3 hours
- Leaves attached to the edge of door and frame, revealing only the slim hinge bevel when door is closed
- Stainless steel is available in (32) highly polished, and (32D) satin finish. Consult the factory for black, white and custom powder coated finishes.
- 1/4" diameter teflon coated pins
- Superior bearing design inhibits dirt collection
- Two stainless steel bearings, top and bottom, prevent door sagging if Nylatron bearings degrade during a fire
- Hinges can be furnished as follows:
  - with hospital tips (HT)
  - with dutch door prep
  - with electric wires (CE) – Specify CE600 current transfer with SHCE600HD shims along with hinge model
  - with electric power transfer (EPT) prep – Specify manufacturer and model number of transfer
  - with raised barrel (RB)
  - custom length
  - with welded pin



Square Edge Door



Beveled 1/8" in 2"  
(3.2 in 51mm) door

Length	Finish	Number of #10 x 1/2" Self Drilling Screws Per Hinge		Number of #10 x 1" Wood Screws Per Hinge	Quantity Per Carton	Carton Weight	
		641	651			Lbs.	(Kg)
6' 8"	(2032)	P	32D	40	20	1	17 (7.7)
7' 0"	(2134)	P	32D	42	21	1	17 (7.7)
7' 2"	(2184)	P	32D	42	21	1	17 (7.7)
8' 0"	(2286)	P	32D	46	23	1	19 (8.6)
10' 0"	(3048)	P	32D	54	27	1	24 (10.9)

Machine screws available separately

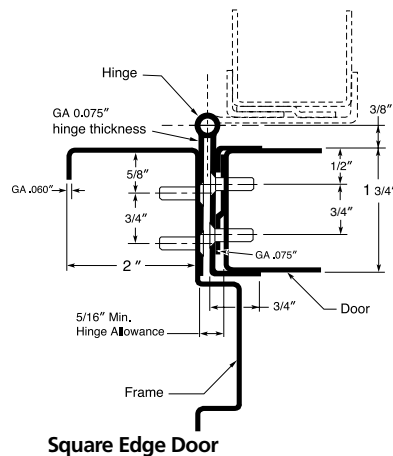


## Architectural Steel And Stainless Steel Barrel Type Continuous Hinges Full Mortise with Adjustable Full-Wrap Edge Guard

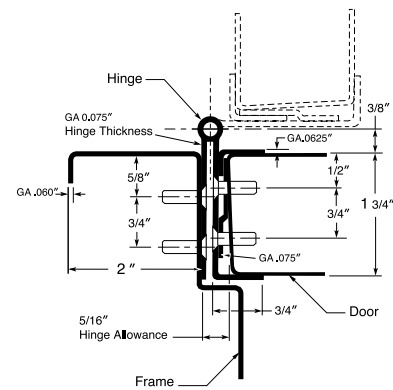
652 – (ANSI A51011B & A51021B) – Standard duty, stainless steel with adjusta-screws



- BHMA certified
- Conforms to ANSI/BHMA Standard A156.26–2006, Grade 1-300
- Supports doors up to 600 lbs.
- Distributes door weight and stress along the full length of door and frame
- No misaligned pivot points of individual hinges
- Full wrap edge guard protects the inside and outside hinge edge of the door and adjusts to various door thicknesses from 1 5/8" to 1 3/4"
- Adjusta-screws have a 3/8" range for correcting fit
- Available finishes are (32) highly polished, and (32D) satin finish. Consult the factory for black, white and custom powder coated finishes.
- 1/4" diameter teflon coated pin
- Fire rated for up to and including 3-hours
- Hinge covered by a limited lifetime warranty for the life of the building
- Superior bearing design inhibits dirt collection
- Two stainless steel bearings, top and bottom, prevent door sagging if Nylatron bearings degrade during a fire
- Hinges can be furnished as follows:
  - with hospital tips (HT)
  - with dutch door prep
  - custom length
  - with electric power transfer (EPT) prep. – Specify manufacturer and model of transfer
  - with welded pin



Square Edge Door



Beveled 1/8" in 2"  
(3.2 in 51mm) door

Length	Finish	Number of #10 x 1/2" Self Drilling Screws Per Hinge	Number of #10 x 1" Wood Screws Per Hinge	Quantity Per Carton	Case Weight	
					Lbs.	(Kg)
6' 8" (2032)	32D	40	20	1	18	(8.2)
7' 0" (2134)	32D	42	21	1	18	(8.2)
7' 2" (2184)	32D	42	21	1	18	(8.2)
8' 0" (2286)	32D	46	23	1	21	(9.5)
10' 0" (3048)	32D	54	27	1	27	(12.2)

Machine screws available separately

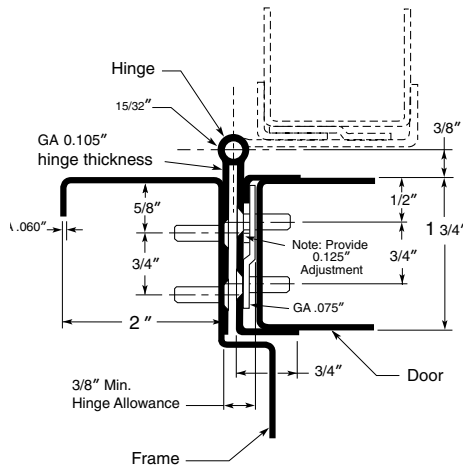
# Architectural Steel And Stainless Steel Barrel Type Continuous Hinges

## Full Mortise with Full-Wrap Edge Guard

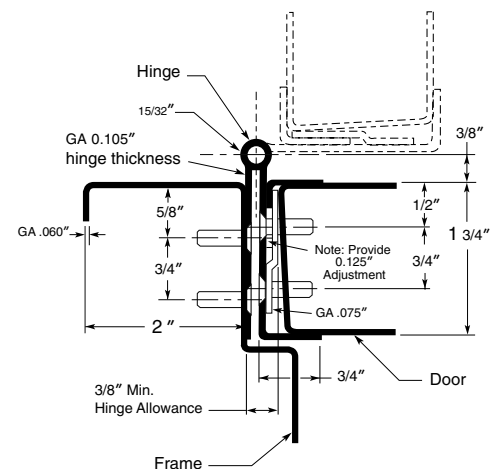
652HD – (ANSI A51011B & A51021B) – Heavy duty 12 gauge stainless steel with adjusta-screws.



- Suitable for healthcare and correctional facilities where high use and/or abuse is expected
- Supports doors up to 900 lbs., 4' maximum door width
- BHMA certified
- Conforms to ANSI/BHMA Standard A156.26–2006, Grade 1-300
- Full wrap edge guard protects the inside and outside of door
- Distributes door weight and stress along the full length of door and frame
- No misaligned pivot points of individual hinges
- Protects the inside edge of door, which is most exposed to damage when open
- Fire rated for up to and including 3 hours
- Hinge covered by a limited lifetime warranty for the life of the building
- Adjusta-screws have a 3/8" range for correcting fit
- Stainless steel is available in (32) highly polished, and (32D) satin finish. Consult the factory for black, white and custom powder coated finishes.
- 1/4" diameter teflon coated pin
- Superior bearing design inhibits dirt collection
- Two stainless steel bearings, top and bottom, prevent door sagging if Nylatron bearings degrade during a fire
- Hinges can be furnished as follows:
  - with hospital tips (HT)
  - with dutch door prep
  - custom length
  - with electric power transfer (EPT) prep. – Specify manufacturer and model of transfer
  - with welded pin



Square Edge Door



Beveled 1/8" in 2"  
(3.2 in 51mm) door

Length	Finish	Number of #10 x 1/2" Self Drilling Screws Per Hinge	Number of #10 x 1" Wood Screws Per Hinge	Quantity Per Carton	Carton Weight	
					Lbs.	(Kg)
6' 8"	(2032)	P 32D	40	20	1	25 (11.3)
7' 0"	(2134)	P 32D	42	21	1	25 (11.3)
7' 2"	(2184)	P 32D	42	21	1	25 (11.3)
8' 0"	(2286)	P 32D	46	23	1	29 (13.2)
10' 0"	(3048)	P 32D	54	27	1	36 (16.3)

Machine screws available separately

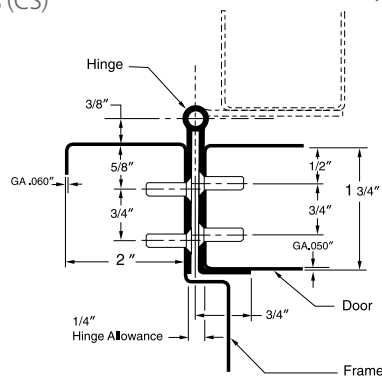
## Architectural Steel And Stainless Steel Barrel Type Continuous Hinges Full Mortise with Half-Wrap Edge Guard

643 – (ANSI A81011B & A81021B) – Standard duty steel

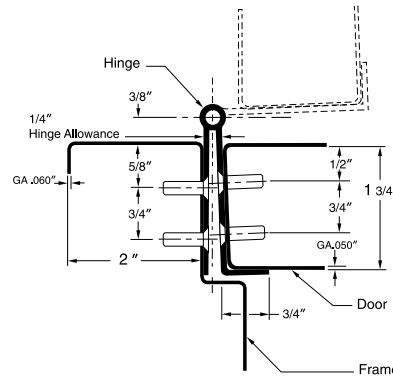
653 – (ANSI A51011B & A51021B) – Standard duty stainless steel



- BHMA certified
- Conforms to ANSI/BHMA Standard A156.26–2006, Grade 1-300
- Supports doors up to 600 lbs.
- Distributes door weight and stress along the full length of door and frame
- No misaligned pivot points of individual hinges
- Protects the inside edge of door, which is most exposed to damage when open
- Fire rated for up to and including 3 hours
- Hinge covered by a limited lifetime warranty for the life of the building
- Steel hinges are prime coated for painting. For other powder coated finishes consult factory
- Stainless steel is available in (32) highly polished, and (32D) satin finish. Consult the factory for black, white and custom powder coated finishes.
- 1/4" diameter teflon coated pin
- Superior bearing design inhibits dirt collection
- Two stainless steel bearings, top and bottom, prevent door sagging if Nylatron bearings degrade during a fire
- Hinges can be furnished as follows:
  - with hospital tips (HT)
  - with dutch door prep
  - with electric wires (CE)
  - with electric switches (CS)
  - with electric power transfer (EPT) prep – Specify manufacturer and model of transfer
  - custom length
  - with welded pin



Square Edge Door



Beveled 1/8" in 2"  
(3.2 in 51mm) door

Length		Finish		Number of #10 x 1/2" Self Drilling Screws Per Hinge	Number of #10 x 1" Wood Screws Per Hinge	Quantity Per Carton	Carton Weight	
Feet	(mm)	643	653				Lbs.	(Kg)
6' 8"	(2032)	P	32D	40	20	1	16	(7.3)
7' 0"	(2134)	P	32D	42	21	1	16	(7.3)
7' 2"	(2184)	P	32D	42	21	1	16	(7.3)
8' 0"	(2286)	P	32D	46	23	1	18	(8.2)
10' 0"	(3048)	P	32D	54	27	1	22	(10)

Machine screws available separately

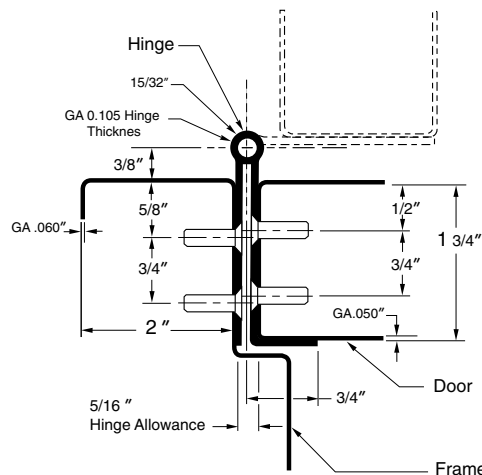
# Architectural Steel And Stainless Steel Barrel Type Continuous Hinges

## Full Mortise with Half-Wrap Edge Guard

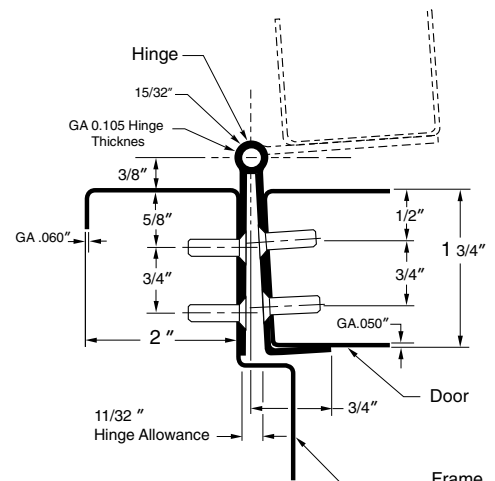
653HD – (ANSI A51011B & A51021B) – Heavy duty 12 gauge stainless steel.



- Suitable for healthcare and correctional facilities where high use and/or abuse is expected
- Supports doors up to 900 lbs., 4' maximum door width
- BHMA certified
- Conforms to ANSI/BHMA Standard A156.26–2006, Grade 1-300
- Distributes door weight and stress along the full length of door and frame
- No misaligned pivot points of individual hinges
- Protects the inside edge of door, which is most exposed to damage when open
- Fire rated for up to and including 3 hours
- Hinge covered by a limited lifetime warranty for the life of the building
- Stainless steel is available in (32) highly polished, and (32D) satin finish. Consult the factory for black, white and custom powder coated finishes.
- 1/4" diameter teflon coated pin
- Superior bearing design inhibits dirt collection
- Two stainless steel bearings, top and bottom, prevent door sagging if Nylatron bearings degrade during a fire
- Hinges can be furnished as follows:
  - with hospital tips (HT)
  - with dutch door prep
  - with electric wires (CE) – Specify CE600 current transfer with SHCE600HD shims along with hinge model
  - with electric power transfer (EPT) prep – Specify manufacturer and model of transfer
  - custom length
  - with welded pin



Square Edge Door



Beveled 1/8" in 2" (3.2 in 51mm) door

Length	Finish	Number of #10 x 1/2" Self Drilling Screws Per Hinge	Number of #10 x 1" Wood Screws Per Hinge	Quantity Per Carton	Carton Weight	
					Lbs.	(Kg)
6' 8"	643	40	20	1	21	(9.5)
7' 0"	653	42	21	1	21	(9.5)
7' 2"	643	42	21	1	21	(9.5)
8' 0"	653	46	23	1	23	(10.4)
10' 0"	643	54	27	1	30	(13.6)

Machine screws available separately

## Architectural Steel And Stainless Steel Barrel Type Continuous Hinges Half Mortise

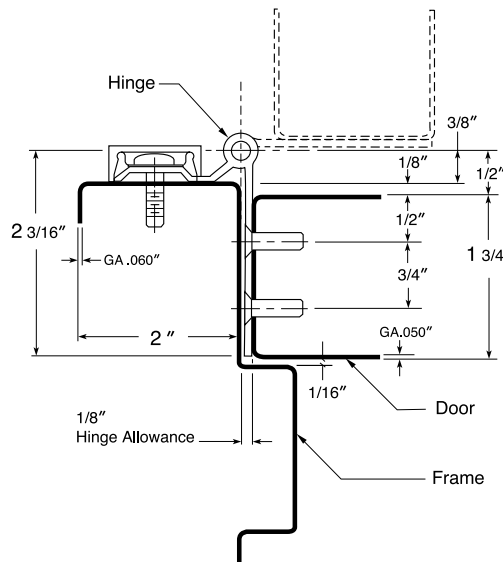
**644** – (ANSI A82011B & A82021B) – Standard duty, steel

**654** – (ANSI A52011B & A52021B) – Standard duty, stainless steel



- BHMA certified
- Conforms to ANSI/BHMA Standard A156.26–2006, Grade 1-300
- Supports doors up to 600 lbs.
- Distributes door weight and stress along the full length of door and frame
- No misaligned pivot points of individual hinges
- Ideal for retrofit applications
- Fire rated for up to and including 3 hours
- Hinge covered by a limited lifetime warranty for the life of the building
- Steel hinges are prime coated for painting. For other powder coated finishes consult factory
- Stainless steel is available in (32) highly polished, and (32D) satin finish. Consult the factory for black, white and custom powder coated finishes.
- 1/4" diameter teflon coated pin
- 6' 8", 7' and 7' 2" use 6 screw cover clips. 8' uses 8 screw cover clips. 10' 0" uses 9 screw cover clips.
- Superior bearing design inhibits dirt collection
- Two stainless steel bearings, top and bottom, prevent door sagging if Nylatron bearings degrade during a fire
- Hinges can be furnished as follows:
  - with hospital tips (HT)
  - with dutch door prep
  - custom length
  - with welded pin

Replacement covers available separately



Length	Finish	Number of 1/4 - 20 x 3/4" Self Drilling Screws Per Hinge		Number of #10 x 1/2" Self Drilling Screws Per Hinge	Number of #10 x 1" Wood Screws Per Hinge	Quantity Per Carton	Carton Weight	
		644	654				Lbs.	(Kg)
6' 8"	(2032)	P	32D	13	20	1	14	(6.4)
7' 0"	(2134)	P	32D	13	21	1	14	(6.4)
7' 2"	(2184)	P	32D	13	21	1	14	(6.4)
8' 0"	(2286)	P	32D	14	23	1	16	(7.3)
10' 0"	(3048)	P	32D	17	27	1	20	(9.1)

Machine screws available separately

# Architectural Steel And Stainless Steel Barrel Type Continuous Hinges

## Half Mortise with Half-Wrap Edge Guard

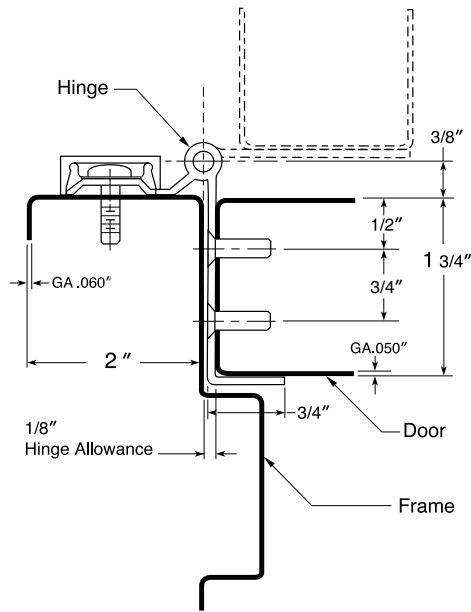
645 – (ANSI A82011B & A82022B) – Standard duty steel

655 – (ANSI A52011B & A52022B) – Standard duty stainless steel



- BHMA certified
- Conforms to ANSI/BHMA Standard A156.26–2006, Grade 1-300
- Supports doors up to 600 lbs.
- Distributes door weight and stress along the full length of door and frame
- No misaligned pivot points of individual hinges
- Ideal for retrofit applications
- Edge guard protects the inside edge of door, which is most exposed to damage when open
- Fire rated for up to and including 3 hours
- Hinge covered by a limited lifetime warranty for the life of the building
- Steel hinges are prime coated for painting. For other powder coated finishes consult factory
- Stainless steel is available in (32) highly polished, and (32D) satin finish. Consult the factory for black, white and custom powder coated finishes.
- 1/4" diameter teflon coated pin
- 6' 8", 7' and 7' 2" use 6 screw cover clips. 8' uses 8 screw cover clips. 10' 0" uses 9 screw cover clips.
- Superior bearing design inhibits dirt collection
- Two stainless steel bearings, top and bottom, prevent door sagging if Nylatron bearings degrade during a fire
- Hinges can be furnished as follows:
  - with hospital tips (HT)
  - with dutch door prep
  - custom length
  - with welded pin

Replacement covers available separately



Length	Finish	Number of 1/4 - 20 x 3/4" Self Drilling Screws Per Hinge		Number of #10 x 1/2" Self Drilling Screws Per Hinge	Number of #10 x 1" Wood Screws Per Hinge	Quantity Per Carton	Carton Weight	
		645	655				Lbs.	(Kg)
6' 8"	(2032) P	32D	13	20	20	1	16	(7.3)
7' 0"	(2134) P	32D	13	21	21	1	16	(7.3)
7' 2"	(2184) P	32D	13	21	21	1	16	(7.3)
8' 0"	(2286) P	32D	14	23	23	1	18	(8.2)
10' 0"	(3048) P	32D	17	27	27	1	22	(10)

Machine screws available separately

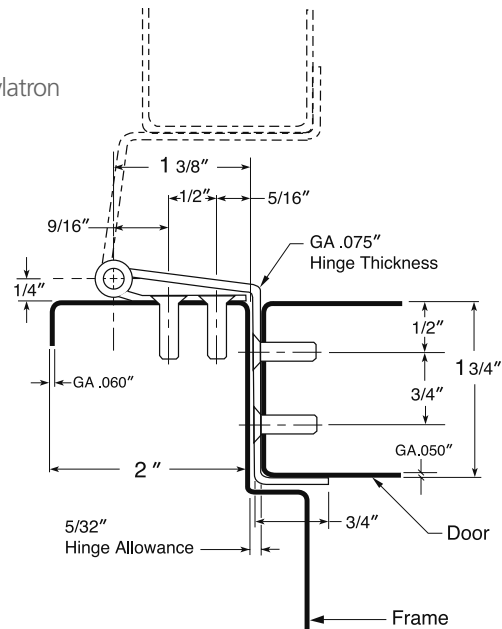
## Architectural Steel And Stainless Steel Barrel Type Continuous Hinges Half Mortise Swing Clear with Half-Wrap Edge Guard

646 – (ANSI A85011B & A85022B) – Standard duty steel

656 – (ANSI A55011B & A55022B) – Standard duty stainless steel



- BHMA certified
- Conforms to ANSI/BHMA Standard A156.26–2006, Grade 1-300
- Supports doors up to 600 lbs.
- To meet ADA requirements for barrier-free clearance in a 32" opening, the pivot point of the hinge is located on the face of the frame, allowing the door to swing out of the opening to provide clear passage by wheel chairs and other equipment
- Distributes door weight and stress along the full length of door and frame
- No misaligned pivot points of individual hinges
- Edge guard protects the inside edge of door, which is most exposed to damage when open
- Fire rated for up to and including 3 hours
- Hinge covered by a limited lifetime warranty for the life of the building
- Steel hinges are prime coated for painting. For other powder coated finishes consult factory
- Stainless steel is available in (32) highly polished, and (32D) satin finish. Consult the factory for black, white and custom powder coated finishes.
- 1/4" diameter teflon coated pin
- Superior bearing design inhibits dirt collection
- Two stainless steel bearings, top and bottom, prevent door sagging if Nylatron bearings degrade during a fire
- Hinges can be furnished as follows:
  - with hospital tips (HT)
  - with dutch door prep
  - custom length



Length	Finish	Number of #10 x 1/2" Self Drilling Screws Per Hinge		Number of #10 x 1" Wood Screws Per Hinge	Quantity Per Carton	Carton Weight	
		646	656			Lbs.	(Kg)
6' 8"	(2032)	P	32D	40	20	1	17 (7.7)
7' 0"	(2134)	P	32D	42	21	1	17 (7.7)
7' 2"	(2184)	P	32D	42	21	1	17 (7.7)
8' 0"	(2286)	P	32D	46	23	1	20 (9.1)
10' 0"	(3048)	P	32D	54	27	1	26 (11.8)

Machine screws available separately

# Architectural Steel And Stainless Steel Barrel Type Continuous Hinges

## Full Surface

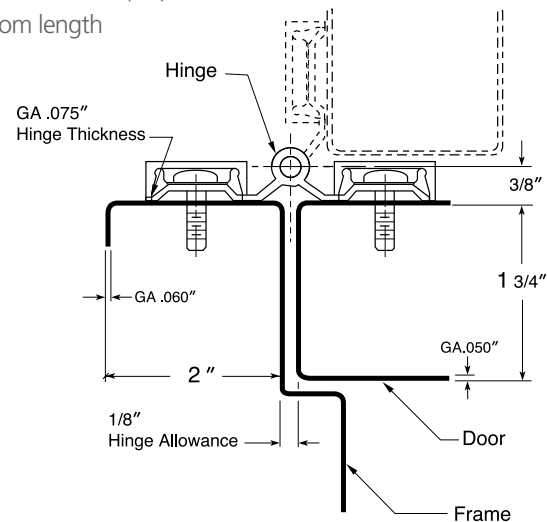
647 – ((ANSI A83011B & A83022B) – Standard duty steel

657 – (ANSI A53011B & A53022B) – Standard duty stainless steel



- BHMA certified
- Conforms to ANSI/BHMA Standard A156.26–2006, Grade 1-300
- Supports doors up to 600 lbs.
- Leaves mount to flush doors and frames, providing secure attachment for doors and frames that cannot support edge mounting. Special #657 Inset configuration is available for 1/8" Inset Doors.
- Through-bolts (1/4" - 20 x 1 3/4" ) are recommended for attaching door leaf and required for UL fire-rated doors
- Distributes door weight and stress along the full length of door and frame
- No misaligned pivot points of individual hinges
- Ideal for retrofit applications
- Fire rated for up to and including 3-hours
- Hinge covered by a limited lifetime warranty for the life of the building
- Steel hinges are prime coated for painting. For other powder coated finishes consult factory
- Stainless steel is available in (32) highly polished, and (32D) satin finish. Consult the factory for black, white and custom powder coated finishes.
- 1/4" diameter teflon coated pin
- Superior bearing design inhibits dirt collection
- Two stainless steel bearings, top and bottom, prevent door sagging if Nylatron bearings degrade during a fire
- With covers on, hinge will swing approximately 160°
- Hinges can be furnished as follows:
  - with pivot point moved forward to allow hinge to swing 180°
  - with dutch door prep
  - with hospital tips (HT)
  - custom length

Replacement covers available separately



Length		Finish		Number of 1/4 - 20 x 3/4" Self Drilling Screws Per Hinge	Number of Screw Cover Clips Per Hinge	Quantity Per Carton	Carton Weight	
Feet	(mm)	647	657				Lbs.	(Kg)
6' 8"	(2032)	P	32D	26	12	1	14	(6.4)
7' 0"	(2134)	P	32D	32	12	1	14	(6.4)
7' 2"	(2184)	P	32D	32	12	1	14	(6.4)
8' 0"	(2286)	P	32D	36	16	1	16	(7.3)
10' 0"	(3048)	P	32D	40	18	1	20	(9.1)

Machine screws available separately

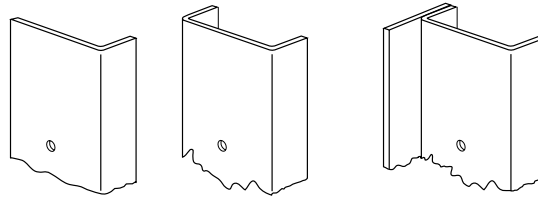
Through-bolts available separately



## Architectural Steel And Stainless Steel Barrel Type Continuous Hinges

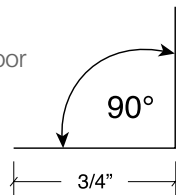
### Edge Guards

- UL listed
- Protects edges of wood, or metal doors
- 20 gauge, 304 series stainless steel
- Supplied with #6 x 5/8" wood screws

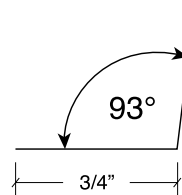


### Half Wrap

Protects one edge of door



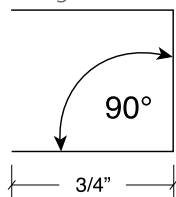
**EG1**  
For Square Edge Doors



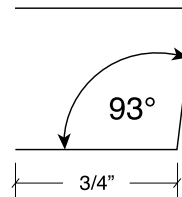
**EG1B**  
For Doors Beveled 1/8" in 2" (3.2 in 51 mm)

### Full Wrap

Protects inside and outside edge of door



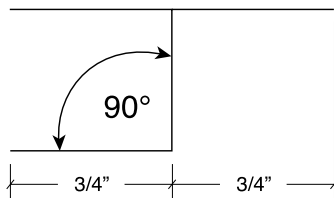
**EG2**  
For Square Edge Doors



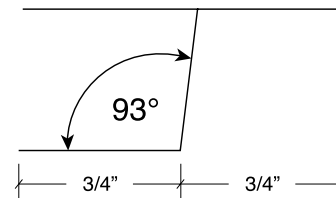
**EG2B**  
For Doors Beveled 1/8" in 2" (3.2 in 51 mm)

### Full Wrap With Astragal

Protects inside and outside edges of door, and provides integrated astragal for security on pairs of doors



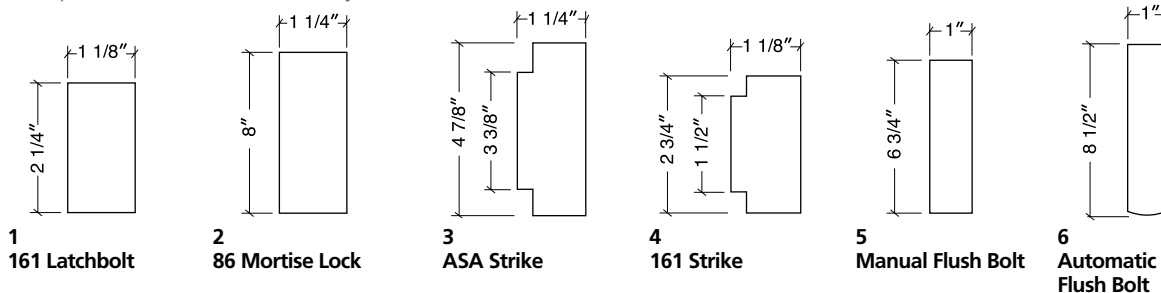
**EG3**  
For Square Edge Doors



**EG3B**  
For Doors Beveled 1/8" in 2" (3.2 in 51 mm)

### Cutout Options

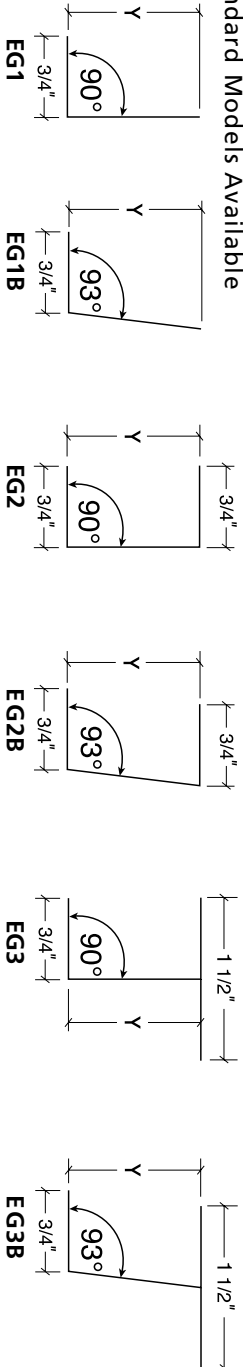
For options shown, consult factory



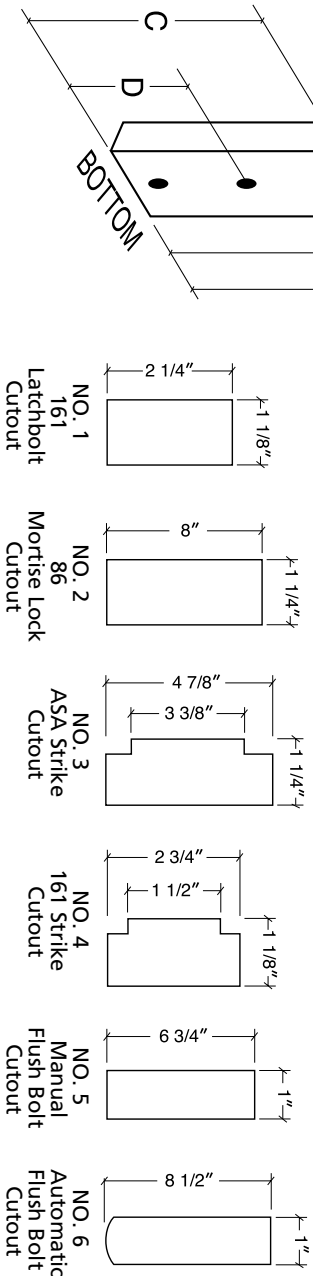
## Edge Guard Special Order Form

Customer Account Number	For Office Use	Customer P.O. Number	Customer P.O. Date	Requested Ship Date

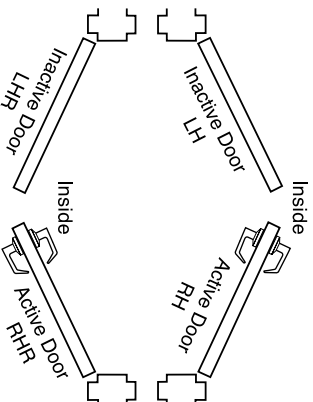
### Standard Models Available



### Standard Cutouts Available



### Handing Information



Line #	Qty.	Model #	Mounting Screws	Hand	Y Door Thickness	A Total Length	Length from bottom of edge guard to the centerline of cutout							
							First cut out No.	B	Second cut out No.	C	Third cut Out No.	D		
1														
2														
3														
4														
5														

## Architectural Steel And Stainless Steel Barrel Type Continuous Hinges

EDP Numbers  
Standard Duty Models



Steel				
Class # & Desc.	Actual Size	Normal Size	Finish	EDP #
<b>641</b> Full Mortise	79 1/8"	6' 8"	P	16-1060
	83 1/8"	7' 0"	P	16-1062
	85 1/8"	7' 2"	P	16-1063
	95 1/8"	8' 0"	P	16-1064
	119 1/8"	10' 0"	P	16-1065
<b>643</b> Full Mortise w/ Half Wrap Edge Guard	79 1/8"	6' 8"	P	16-1066
	83 1/8"	7' 0"	P	16-1067
	85 1/8"	7' 2"	P	16-1068
	95 1/8"	8' 0"	P	16-1069
	119 1/8"	10' 0"	P	16-1070
<b>644</b> Half Mortise	79 1/8"	6' 8"	P	16-1072
	83 1/8"	7' 0"	P	16-1073
	85 1/8"	7' 2"	P	84-7269
	95 1/8"	8' 0"	P	16-1075
	119 1/8"	10' 0"	P	16-1076
<b>645</b> Half Mortise w/ Half Wrap Edge Guard	79 1/8"	6' 8"	P	16-1077
	83 1/8"	7' 0"	P	16-1078
	85 1/8"	7' 2"	P	16-1079
	95 1/8"	8' 0"	P	16-1080
	119 1/8"	10' 0"	P	16-1082
<b>646</b> Steel Swing Clear	79 1/8"	6' 8"	P	16-1083
	83 1/8"	7' 0"	P	16-1084
	85 1/8"	7' 2"	P	16-1085
	95 1/8"	8' 0"	P	16-1086
	119 1/8"	10' 0"	P	16-1087
<b>647</b> Full Surface	79 1/8"	6' 8"	P	16-1088
	83 1/8"	7' 0"	P	16-1089
	85 1/8"	7' 2"	P	16-1090
	95 1/8"	8' 0"	P	16-1091
	119 1/8"	10' 0"	P	16-1092

Stainless Steel				
Class # & Desc.	Actual Size	Normal Size	Finish	EDP #
<b>651</b> Full Mortise	79 1/8"	6' 8"	32D	16-1093
	83 1/8"	7' 0"	32D	16-1094
	85 1/8"	7' 2"	32D	16-1095
	95 1/8"	8' 0"	32D	16-1096
	119 1/8"	10' 0"	32D	16-1097
<b>652</b> Full Mortise w/ Full Wrap Edge Guard	79 1/8"	6' 8"	32D	16-1098
	83 1/8"	7' 0"	32D	16-1099
	85 1/8"	7' 2"	32D	16-1100
	95 1/8"	8' 0"	32D	16-1107
	119 1/8"	10' 0"	32D	16-1108
<b>653</b> Full Mortise w/ Half Wrap Edge Guard	79 1/8"	6' 8"	32D	16-1109
	83 1/8"	7' 0"	32D	16-1110
	85 1/8"	7' 2"	32D	16-1111
	95 1/8"	8' 0"	32D	16-1112
	119 1/8"	10' 0"	32D	16-1113
<b>654</b> Half Mortise	79 1/8"	6' 8"	32D	16-1114
	83 1/8"	7' 0"	32D	16-1115
	85 1/8"	7' 2"	32D	16-1116
	95 1/8"	8' 0"	32D	16-1117
	119 1/8"	10' 0"	32D	16-1118
<b>655</b> Half Mortise w/ Half Wrap Edge Guard	79 1/8"	6' 8"	32D	16-1119
	83 1/8"	7' 0"	32D	16-1120
	85 1/8"	7' 2"	32D	16-1121
	95 1/8"	8' 0"	32D	16-1122
	119 1/8"	10' 0"	32D	16-1123
<b>656</b> Steel Swing Clear	79 1/8"	6' 8"	32D	16-1124
	83 1/8"	7' 0"	32D	16-1125
	85 1/8"	7' 2"	32D	16-1126
	95 1/8"	8' 0"	32D	16-1127
	119 1/8"	10' 0"	32D	16-1128
<b>657</b> Full Surface	79 1/8"	6' 8"	32D	16-1129
	83 1/8"	7' 0"	32D	16-1130
	85 1/8"	7' 2"	32D	16-1131
	95 1/8"	8' 0"	32D	16-1132
	119 1/8"	10' 0"	32D	16-1133

Heavy Duty Models (Stainless Steel)				
Class # & Desc.	Actual Size	Normal Size	Finish	EDP #
<b>651HD</b> Heavy Duty Full Mortise	79 1/8"	6' 8"	32D	10-0438
	83 1/8"	7' 0"	32D	10-0446
	85 1/8"	7' 2"	32D	10-0453
	95 1/8"	8' 0"	32D	10-0461
	119 1/8"	10' 0"	32D	10-0479
<b>652HD</b> Heavy Duty Full Mortise w/ Full Wrap Edge Guard	79 1/8"	6' 8"	32D	10-0487
	83 1/8"	7' 0"	32D	10-0495
	85 1/8"	7' 2"	32D	10-0503
	95 1/8"	8' 0"	32D	10-0511
	119 1/8"	10' 0"	32D	10-0529
<b>653HD</b> Heavy Duty Full Mortise w/ Half Wrap Edge Guard	79 1/8"	6' 8"	32D	10-0537
	83 1/8"	7' 0"	32D	10-0545
	85 1/8"	7' 2"	32D	10-0552
	95 1/8"	8' 0"	32D	10-0560
	119 1/8"	10' 0"	32D	10-0578



# STANLEY®

6161 East 75th Street  
Indianapolis, IN 46250 USA

Phone 855-365-2407

[stanleyhardwarefordoors.com](http://stanleyhardwarefordoors.com)

SAH013 Rev2/3/2019  
© 2019 dormakaba USA Inc. All rights reserved.

© 2019 Stanley Black & Decker, Inc. STANLEY® and the STANLEY® Notched Rectangle logo are registered trademarks of Stanley Black & Decker Inc. or one of its affiliates, and are used under license

**dormakaba** 

[dormakaba.com](http://dormakaba.com)