

LOCKS | EXITS | CLOSERS | HINGES **COMMERCIAL HARDWARE**

QuickShip enables you to expedite just about any order—no matter its size, complexity, or urgency—because when we receive your order by 12PM EST from our wide range of QuickShip products, we ship your order out the same day.

QuickShip Program

Top products. Same-day shipping.

Introduction

What if you could scale up your inventory with BEST, PRECISION, and STANLEY's top products whenever the need arose? We want to give you that agility, and the peace of mind that we can fill orders for a variety of products on the same day.

Our QuickShip Program allows you to order a wide range of our most popular products—locks, exit devices, closers, hinges, and more—from three of the top brands in the industry: BEST, PRECISION, and STANLEY. The breadth of products included in our QuickShip program ensures that you can fill orders with confidence. When you choose BEST, PRECISION, and STANLEY products, you'll get unmatched quality and value backed by decades of experience and trust. Now, with QuickShip, the industry-leading brands you turn to for security solutions can be at your door faster than ever.

HOW TO ORDER

QuickShip Policy

The terms and conditions contained herein shall govern the sale of all BEST, PRECISION and STANLEY products located in the QuickShip Catalog and/or offered for sale by dormakaba USA Inc. as a QuickShip sale. The acceptance by dormakaba USA Inc. of any QuickShip order is expressly made conditional upon your assent to these terms and conditions.

Order Form

To place an order under the QuickShip catalog please clearly mark "QuickShip" on the purchase order, fax or email.

The preferred method for receiving QuickShip orders is via email with "QuickShip" indicated in the subject line.

Please send all orders to BAS-orderentry.us@dormakaba.com or by fax to 877-835-1030.

Applicability

Only those products identified in the QuickShip Catalog are eligible for the QuickShip Program, unless otherwise expressly offered for sale by dormakaba USA Inc. as QuickShip in writing. dormakaba USA Inc. reserves the right to limit quantities. The QuickShip Program only applies to buy program (no quotes) and is only offered for sale and shipment of products within the United States (excluding Hawaii and Alaska).

QuickShip Fees

All QuickShip orders will be assessed a 10% expediting fee to the total net price.

Shipment

Orders received by 12:00 pm EST, Monday through Friday, are guaranteed to ship same day. Orders received after 12:00 pm EST will ship the following business day. All products will be shipped FOB Origin domestic from dormakaba's facility in Indianapolis, Indiana USA using standard ground freight unless otherwise requested by customer at their own expense.

Freight

Standard freight terms apply. See the current and applicable BEST, PRECISION or STANLEY Product Price List for details.

All expedited freight costs will be charged to the customer's account, regardless of order value.

Changes & Cancellations

Due to the promptness of the QuickShip Program, no changes or cancellations will be accepted.

Terms and Conditions

The sale of BEST, PRECISION and STANLEY Products under the QuickShip Program is subject to the Terms and Conditions of Sale and Policies located in the current and applicable BEST, PRECISION, or STANLEY Product Price List, including payment terms (2% 15, net 30 days). Please see the relevant Product Price List for full details regarding terms of sale, quoting and ordering information, warranty and return information, and relevant sales policies.

dormakaba USA Inc. reserves the right, in its sole discretion, to change or amend its QuickShip Program at any time, without incurring any liability whatsoever to its Customer or others.

TABLE OF CONTENTS



LOCKS/CORES/KEYS

- 4 Mortise Locks
- 4 Cylindrical Locks
- 4 Deadbolt Locks
- 5 Cores
- 5 Keys
- 6 E Series Cylinders
Standard Rim
- 6 E Series Cylinders
Mortise
- 6 S Series
Sliding Door Locks
- 6 L Series
Cabinet Locks
- 6 B Series
Padlocks
- 6 Parts



EXIT DEVICES

- 7 3R0 Series
Trims
- 7 2100 3R0 Series
APEX Rim – Reversible, Wide Stile
- 7 2100 3R0 Series
APEX Rim – Reversible, Wide Stile with Pull Trim
- 8 2100 3R0 Series
APEX Rim – Reversible, Wide Stile with Lever Trim
- 9 2200 3R0 Series
APEX Surface Vertical Rod – Reversible
- 9 2300 3R0 Series
APEX Mortise
- 10 2400 3R0 Series
APEX Narrow Stile Rim
- 10 3R0 Series
Parts

STANLEY

CLOSERS

- 11 D-4550 / 4551 Series
Surface Closers
- 12 D-3550 / 3551 Series
Surface Closers
- 12 D-1610 / 1611 Series
Surface Closers
- 12 Closers
Parts

STANLEY COMMERCIAL HARDWARE

- 13 QCL100 Series
Grade 1 Cylindrical Locks
- 14 QCL200 Series
Grade 2 Cylindrical Locks
- 14 QCI200 Series
Grade 2 Interconnected Locks
- 15 QTL200 Series
Grade 2 Tubular Locks
- 15 QDB100/200 Series
Grade 1 & 2 Auxiliary Deadbolts
- 16 QED/QET100 Series
Heavy-Duty Exit Devices & Trims
- 16 QED/QET/QRT300 Series
Standard-Duty Exit Devices & Trims
- 17 QDC100 Series
Extra-Duty Closers
- 17 QDC200 Series
Heavy-Duty Closers
- 17 QDC300 SERIES
Standard-Duty Closers

STANLEY

HINGES

- 18 5 Knuckle Hinges
- 18 3 Knuckle Hinges
- 18 Spring Hinges
- 18 Electrified Hinges

• = AVAILABLE

	CORE HOUSING	FUNCTION	BACK-SET		LEVER		KNOB		TRIM						STRIKE			FINISH				HANDLING				LIST PRICE		
			2	3	14	15	4	6	A	C	D	H	S	J	STK	S1	S3	626	RH	RHR	LH	LHR	\$	WITH J TRIM				
MORTISE (40H)	45H	SINGLE KEYED	7-PIN HOUSING	AB-OFFICE/ ENTRANCE (LATCH + DEADBOLT)																				954.00				
				A-OFFICE (LATCH)																							926.00	939.00
				D-STOREROOM																							926.00	939.00
				R-CLASSROOM																							926.00	939.00
				TA-DORMITORY (W/ TOGGLE LOCK)																							954.00	
				T-DORMITORY																							954.00	967.00
		UNIVERSAL																						925.00				
		DOUBLE-KEY																						1009.00				
		NON-KEYED	NA	N-PASSAGE																				732.00				
		48H	SINGLE KEYED	7-PIN HOUSING	K-Cylinder Deadlock																			369.00				
	R-Cylinder Deadlock																								424.00			
		DOUBLE-KEY		M-Cylinder Deadlock																			445.00					
CYLINDRICAL (6K-9K)	6K	SINGLE KEYED	7-PIN HOUSING	AB-OFFICE/ ENTRANCE																				252.00				
				D-STOREROOM																						252.00		
				R-CLASSROOM																						252.00		
		7KC	SINGLE KEYED	7-PIN HOUSING	AB-OFFICE/ ENTRANCE																				311.00			
	D-STOREROOM																									311.00		
	R-CLASSROOM																									311.00		
		NON-KEYED	NA		L-PRIVACY																				250.00			
					N-PASSAGE																					228.00		
		8K	SINGLE KEYED	7-PIN HOUSING	AB-OFFICE/ ENTRANCE																				708.00			
					D-STOREROOM																					708.00		
					R-CLASSROOM																						708.00	
					T-DORMITORY																						708.00	
		NON-KEYED	NA		L-PRIVACY																				614.00			
					N-PASSAGE																					534.00		
	9K	SINGLE KEYED	7-PIN HOUSING	AB-OFFICE/ ENTRANCE																				665.00				
				D-STOREROOM																					665.00			
				R-CLASSROOM																						665.00		
				T-DORMITORY																						665.00		
		DOUBLE-KEY			IN-INTRUDER																				758.00			
					NON-KEYED	NA	L-PRIVACY																			535.00		
				N-PASSAGE																			464.00					
DEADBOLT	8T	SINGLE KEYED	7-PIN HOUSING	K-DEADBOLT, TURNKNOB																				217.00				
				L-DEADBOLT, NO TURNKNOB																						217.00		
				S-DEADBOLT, CLASSROOM																						217.00		
				M-DEADBOLT, CS-STANDARD																						286.00		
			NON-KEYED	NA	KL-DEADBOLT, TURNKNOB																				180.00			

STANDARD CORES		CORE SIZE		KEYWAYS																COMB. CODE	FINISH	LIST PRICE				
		A	B	C	D	E	F	G	H	J	K	L	M	N	Q	R	X	TB	TC	TD	TE	DD	Uncomb (1)	626		
1C	7-Pin	•	•	•	•	•	•	•	•	•	•	•	•	•	•	•	•	•	•	•	•	•	•	•	•	
	6-Pin	•	•	•	•	•	•	•	•	•	•	•	•	•	•	•	•	•	•	•	•	•	•	•	•	•

PREMIUM CORES		CORE SIZE		KEYWAYS						COMB. CODE	Finish	LIST PRICE
		WA	WB	WC	WD	WG	WH	WY	Uncomb (1)	626		
1CP	7-Pin	•	•	•	•	•	•	•	•	X	52.00	

PEAKS CORES		CORE SIZE		KEYWAYS						COMB. CODE	Finish	LIST PRICE
		B1	B2	B3	B7	B8	B9	B10	Uncomb (1)	626		
1CB	7-Pin	•	•	•	•	•	•	•	•	•	62.00	
	6-Pin	•	•	•	•	•	•	•	•	•	62.00	

CONSTRUCTION CORES		CORE SIZE		KEYWAYS			COMB. CODE	Finish	NET PRICE
		A2			Uncomb (1)	Green			
1CC	7-Pin	•	•	•	•	•	8.00		

STANDARD KEYS		SHAPE		KEYWAYS																CUT						KEY STAMP			LIST PRICE
		A	B	C	D	E	F	G	H	J	K	L	M	N	Q	R	X	TB	TC	TD	TE	DD	Blank	Front	Back				
1A	Standard	•	•	•	•	•	•	•	•	•	•	•	•	•	•	•	•	•	•	•	•	•	•	•	•	 KS208 BEST DUPLICATION PROHIBITED	KS800 (None)	3.40	
		•	 KS473 BEST DUPLICATION PROHIBITED																										

PREMIUM KEYS		SHAPE		KEYWAYS						CUT		KEY STAMP		LIST PRICE
		WA	WB	WC	WD	WG	WH	WY	Blank	Front	Back			
1AP	Standard	•	•	•	•	•	•	•	•	KS567	KS800 (None)	5.80		
		•	KS609											

PEAKS KEYS		TYPE		KEYWAYS						PIN SIZE		CUT	LIST PRICE
		B1	B2	B3	B7	B8	B9	B10	6	7	Blank		
1AK	Operating	•	•	•	•	•	•	•	•	•	•	8.40	
		•	•	•	•	•	•	•	•	•			

CONSTRUCTION KEYS		SHAPE		KEYWAYS		CUT	KEY STAMP		LIST PRICE
		A		CUT	Front	Back			
1A	Standard	•		•	KS531	KS681	6.00		
		•		•		KS682			

E Series Cylinders - Standard Rim

PRODUCT #	SERIES	LIST PRICE
12E72S2R704626	1E	74.5
12E72S2RP3626	1E	67
12E72S2RP626	1E	67

E Series Cylinders - Mortise

PRODUCT #	SERIES	LIST PRICE
1E04RP3626	1E	42.00
1E7422C4RP3626	1E	103.00
1E74C118RP3626	1E	77.00
1E74C127RP3626	1E	77.00
1E74C161RP3626	1E	77.00
1E74C181RP3626	1E	77.00
1E74C181RP5626	1E	77.00
1E74C191RP3626	1E	77.00
1E74C208RP3626	1E	77.00
1E74C210RP3626	1E	77.00
1E74C258RP3626	1E	77.00
1E74C265RP3626	1E	77.00
1E74C4RP3626	1E	77.00
1E74C4RP5626	1E	77.00
1E76C181RP1626	1E	77.00
1E76C181RP3626	1E	77.00
1EA6A4C413RP3626	1E	57.00
1EB7B4C4RP3626	1E	116.00
1EC7C4C181CR10626	1E	116.00
1ED7D4C228RP3626	1E	116.00
1EE7E4C229RP3626LH	1E	116.00
1EE7E4C229RP3626RH	1E	116.00
1ESPL7A35124C208RP3626	1E	72.00
1ESPL7A35124C4RP3626	1E	72.00

S Series Sliding Door Locks

PRODUCT #	SERIES	LIST PRICE
3S773SS52627	3S	155.00
3S783SS52627	3S	230.00
4S73626	4S	83.00

L Series Cabinet Locks

PRODUCT #	SERIES	LIST PRICE
3L7RD2626	3L	107.00
5L7MD2626	5L	78.00
5L7MD2626T	5L	78.00
5L7ML2626	5L	78.00
5L7RD2626	5L	78.00
5L7RD2626A451	5L	78.00
5L7RD2626T	5L	78.00
5L7RD5626	5L	78.00
5L7RL2626	5L	78.00

B Series Padlocks

PRODUCT #	SERIES	LIST PRICE
11B720LF3	B	62.00
11B722L	B	62.00
11B722LM	B	62.00
11B722T	B	62.00
11B72L	B	62.00
11B772L	B	66.00
11B772T	B	66.00
11B782L	B	74.00
21B720L	B	64.00
21B721LSH	B	121.00
21B722L	B	64.00
21B722LM	B	64.00
21B722LM1	B	76.00
21B722LM5	B	84.00
21B722LWC	B	71.60
21B722T	B	64.00
21B72L	B	64.00
21B770L	B	67.00
21B772L	B	67.00
21B772LM	B	67.00
21B772LM5	B	87.00
21B772LWC	B	74.60
21B772T	B	67.00
21B782L	B	75.00
21JB7T18	B	85.00
21JB7T24	B	85.00
41B722L	B	66.00
41B722T	B	66.00
41B72L	B	66.00
41B772L	B	69.00
41B772T	B	69.00
41B782L	B	77.00

PRODUCT #	SERIES	DESCRIPTION	LIST PRICE
B54200	9K	7-Pin Throw Member	1.90
8TD3B626	8T	Deadbolt	51.00
8TD2B626	8T	Deadbolt	51.00



2100

PRODUCT #	FUNCTION	HANDING	FINISH	OPTIONS	WIDTH	LIST PRICE
3R02103630	Night Latch/Key Retracts latch Bolt	RHRB/LHRB*	630		3	1630.00
3R02108630	Class Room/Key Locks/Unlocks Outside Trim	RHRB	630		3	1630.00
3R02103CD630	Night Latch/Key Retracts latch Bolt	RHRB	630	Cylinder Dogging	3	1723.00
3R02103630	Night Latch/Key Retracts latch Bolt	RHRB	630		4	1630.00

2103 preconfigured to accommodate 01, 02, 03 functions.
2108 preconfigured to accommodate 05, 08, 14 & 15 functions.
*Specify Right or Left Handing



Pull Trim



2100

PRODUCT #	FUNCTION	HANDING	FINISH	OPTIONS	WIDTH	LIST PRICE
3R02102 X 1702A 630	Exit Only/Dummy Trim	RHRB/LHRB*	630		3	1923.00
3R02103 X 1703A 630	Night Latch/Key Retracts latch Bolt	LHRB	630		3	1923.00
3R02102CD X 1702A 630	Exit Only/Dummy Trim	LHRB	630	Cylinder Dogging	3	2016.00
3R02103CD X 1703A 630	Night Latch/Key Retracts latch Bolt	LHRB	630	Cylinder Dogging	3	2016.00

NOTE – All 2100 Series Exit Devices can be field converted to accommodate the following functions. (01, 02, 03, 05, 08, 14 & 15)
See instructions packaged with product
*Specify Right or Left Handing



4900A
"A" Lever



2100

PRODUCT #	FUNCTION	HANDING	FINISH	OPTIONS	WIDTH	LIST PRICE
3R02103 X 4903A 630	Night Latch/Key Retracts latch Bolt	RHRB/LHRB*	630		3	2143.00
3R02103 X 4903D 630	Night Latch/Key Retracts latch Bolt	RHRB	630		3	2143.00
3R02103CD X 4903A 630	Night Latch/Key Retracts latch Bolt	RHRB	630	Cylinder Dogging	3	2236.00
3R02103CD X 4903D 630	Night Latch/Key Retracts latch Bolt	RHRB	630	Cylinder Dogging	3	2236.00
3R0FL2103 4903A 630	Night Latch/Key Retracts latch Bolt	RHRB/LHRB*	630	Fire Rated	3	2329.00
3R0FL2103 4903D 630	Night Latch/Key Retracts latch Bolt	RHRB/LHRB*	630	Fire Rated	3	2329.00
3R0FL2108 4908A 630	Class Room/Key Locks/Unlocks Outside Trim	RHRB/LHRB*	630	Fire Rated	4	2457.00

*Specify Right or Left Handing

PRODUCT #	FUNCTION	HANDING	FINISH	OPTIONS	WIDTH	LIST PRICE
3R02108 X V4908A 630	Class Room/Key Locks/Unlocks Outside Trim	RHRB	630		3	2271.00
3R02114 X 4914A 630	Passage/Outside Trim Always Unlocked	RHRB/LHRB*	630		3	2271.00
3R02108CD X 4908A 630	Class Room/Key Locks/Unlocks Outside Trim	RHRB	630	Cylinder Dogging	3	2364.00
3R02108 4908A 630	Class Room/Key Locks/Unlocks Outside Trim	RHRB/LHRB*	630		3	2271.00
3R02108 4908D 630	Class Room/Key Locks/Unlocks Outside Trim	RHRB/LHRB*	630		3	2271.00
3R02110 4908A 630	Intruder/Inside Key Controls Outside Trim	RHRB	630		3	2804.00
3R0FL2108 V4908A 630	Class Room/Key Locks/Unlocks Outside Trim	RHRB/LHRB*	630	Fire Rated	3	2457.00
3R0FL2108 V4908D 630	Class Room/Key Locks/Unlocks Outside Trim	RHRB/LHRB*	630	Fire Rated	3	2457.00
3R0FL2110 4908A 630	Intruder/Inside Key Controls Outside Trim	RHRB	630	Fire Rated	3	2990.00
3R02108 X V4908A 630		RHRB/LHRB*	630		4	2271.00

*Specify Right or Left Handing

PRODUCT #	FUNCTION	HANDING	FINISH	OPTIONS	WIDTH	LIST PRICE
3R0FL-2108 X 4908A 630	Class Room/Key Locks/Unlocks Outside Trim	RHRB/LHRB*	630	Fire Rated	3	2457.00
3R0FL-2114 X 4914A 630	Passage/Outside Trim Always Unlocked	RHRB/LHRB*	630	Fire Rated	3	2457.00
3R0FL-2114 X 4914D 630	Passage/Outside Trim Always Unlocked	RHRB/LHRB*	630	Fire Rated	3	2457.00
3R0FL-2108 X V4908A 630	Class Room/Key Locks/Unlocks Outside Trim	RHRB	630	Fire Rated	4	2457.00
3R0FL-2114 X 4914A 630	Passage/Outside Trim Always Unlocked	RHRB	630	Fire Rated	4	2457.00

*Specify Right or Left Handing



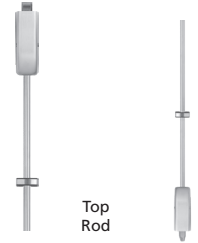
PRECISION | EXIT DEVICES | 2200 3R0 APEX SURFACE VERTICAL ROD – REVERSIBLE



4900A
"A" Lever



2200



Top
Rod

Bottom
Rod

PRODUCT #	FUNCTION	HANDING	FINISH	OPTIONS	WIDTH	LIST PRICE
3R0FL 2201LBR 630	Exit Only	LHRB	630	Fire Rated/Less Bottom Rod	3	2442.00
3R02208 4908A 630	Class Room/Key Locks/Unlocks Outside Trim	RHRB	630		3	2897.00
3R0FL2208LBR 4908A 630	Class Room/Key Locks/Unlocks Outside Trim	RHRB/LHRB*	630	Fire Rated/Less Bottom Rod	3	3083.00

(2203 preconfigured to accommodate 01, 02, 03 functions)

*Specify Right or Left Handing

PRECISION



PRECISION | EXIT DEVICES | 2300 3R0 APEX MORTISE



4900A
"A" Lever



2300

PRODUCT #	FUNCTION	HANDING	FINISH	OPTIONS	WIDTH	LIST PRICE
3R02308 M4908A 630	Class Room/Key Locks/Unlocks Outside Trim	RHRB	630		3	2863.00
3R0FL2303 M4903A 630	Night Latch/Key Retracts latch Bolt	RHRB	630	Fire Rated	3	2921.00
3R0FL2314 M4914A 630	Passage/Outside Trim Always Unlocked	RHRB/LHRB*	630	Fire Rated	3	3049.00

*Specify Right or Left Handing



2900A
"A" Lever



2400

PRODUCT #	FUNCTION	HANDING	FINISH	OPTIONS	Width	LIST PRICE
3R02403 630	Night Latch/Key Retracts latch Bolt	Non-Handed	630		3	1817.00
3R02408 X 2908A 630	Class Room/Key Locks/Unlocks Outside Trim	RHRB/LHRB*	630		3	2458.00
3R02403 630	Night Latch/Key Retracts latch Bolt	Non-Handed	630		4	1817.00
3R02408 X 2908A 630	Class Room/Key Locks/Unlocks Outside Trim	RHRB/LHRB*	630		4	2458.00

(2403 preconfigured to accommodate 01, 02, 03, 08 functions)

*Specify Right or Left Handing

1700A
"A" Grip



4900A
"A" Lever



PRODUCT #	DESCRIPTION	FINISH	LIST PRICE
3R01703ARHRB630	Night Latch, Pull Trim	630	293.00
3R04908ALHRB630	Classroom, Lever Trim	630	641.00
3R04908ARHRB630	Classroom, Lever Trim	630	641.00
3R04914ARHRB630	Passage, Lever Trim	630	641.00
3R0V4908ALHRB630	Classroom, Vandal Resistant, Lever Trim	630	641.00
3R0V4908ARHRB630	Classroom, Vandal Resistant, Lever Trim	630	641.00

PRODUCT #	DESCRIPTION	LIST PRICE
02189-06-000	EPT-5 POWER TRANSFER 02189	247.00
RPSELR150	ELR Power Supply (Without Control Modules)	481.00
RPSELR151	ELR Power Supply (with 1 Control Module)	757.00
RPSELR152	ELR Power Supply (with 2 Control Modules)	1033.00



D-4550

PRODUCT #	DESCRIPTION	FINISH	LIST PRICE
D-4550	Tri Pack (Regular, Parallel, Top Jamb)	689	499.00
D-4550SN	Tri Pack (Regular, Parallel, Top Jamb) With Sex Bolts	689	507.00
D-4550H	Hold Open (Regular & top Jamb)	689	534.00
D-4550EDA	Heavy Duty (Parallel Arm)	689	534.00
D-4550HEDA	Hold Open - Heavy Duty (Parallel Arm)	689	594.00
D-4550S	Heavy Duty With Stop (Parallel Arm)	689	584.00
D-4550CS	Heavy Duty With Compression Stop (Parallel Arm)	689	777.00
D-4550HCS	Heavy Duty With Hold Open & Compression Stop (Parallel Arm)	689	826.00
D-4550HS	Heavy Duty Arm w/ Hold Open & Stop (Parallel Arm only)	689	646.00

(Spring Range 2 – 6) Accommodates "ADA" 5lb opening force on all applications except pull side regular arm mount

PRODUCT #	DESCRIPTION	FINISH	LIST PRICE
D-4551	Tri Pack (Regular, Parallel, Top Jamb)	689	499.00
D-4551SN	Tri Pack (Regular, Parallel, Top Jamb) With Sex Bolts	689	507.00
D-4551H	Hold Open (Regular & top Jamb)	689	534.00
D-4551EDA	Heavy Duty (Parallel Arm)	689	534.00
D-4551S	Heavy Duty With Stop (Parallel Arm)	689	584.00
D-4551CS	Heavy Duty With Compression Stop (Parallel Arm)	689	777.00
D-4551HCS	Heavy Duty With Hold Open & Compression Stop (Parallel Arm)	689	826.00
D-4551T	Track Mounting (Pull Side Only)	689	572.00
D-4551HS	Heavy Duty Arm w/ Hold Open & Stop (Parallel Arm only)	689	646.00

(Spring Range 1 – 5) Accommodates "ADA" 5lb opening force



D-3550

PRODUCT #	DESCRIPTION	FINISH	LIST PRICE
D-3550	Tri Pack (Regular, Parallel, Top Jamb)	689	407.00
D-3550SN	Tri Pack (Regular, Parallel, Top Jamb) With Sex Bolts	689	415.00
D-3550EDA	Heavy Duty (Parallel Arm)	689	442.00
D-3550S	Heavy Duty With Stop (Parallel Arm)	689	492.00
D-3550CS	Heavy Duty With Compression Stop (Parallel Arm)	689	685.00

(Spring Range 2 – 6) Accommodates "ADA" 5lb opening force on all applications except pull side regular arm mount

PRODUCT #	DESCRIPTION	FINISH	LIST PRICE
D-3551	Tri Pack (Regular, Parallel, Top Jamb)	689	407.00
D-3551SN	Tri Pack (Regular, Parallel, Top Jamb) With Sex Bolts	689	415.00
D-3551CS	Heavy Duty With Compression Stop (Parallel Arm)	689	685.00

(Spring Range 1 – 4) Accommodates "ADA" 5lb opening force



D-1610

PRODUCT #	DESCRIPTION	FINISH	LIST PRICE
D-1610	Tri Pack (Regular, Parallel, Top Jamb) Less Cover	689	204.00

(Spring Range 2 – 5) Accommodates "ADA" 5lb opening force

PRODUCT #	DESCRIPTION	FINISH	LIST PRICE
D-1611	Tri Pack (Regular, Parallel, Top Jamb) Less Cover	689	204.00

(Spring Range 1 – 4) Accommodates "ADA" 5lb opening force

PRODUCT #	DESCRIPTION	LIST PRICE
CLP45-180689	Drop Plate (Std, PA or TJ Mount)	69.00
CLP45-180D689	Drop Plate (PA Mount, Heavy Duty for use with a narrow top rail)	69.00
CLP45HD-110689	Spacer Block for Mounting HD Arms on Rabbet	30.00

STANLEY COMMERCIAL HARDWARE | QCL100 SERIES | GRADE 1 CYLINDRICAL LOCKS

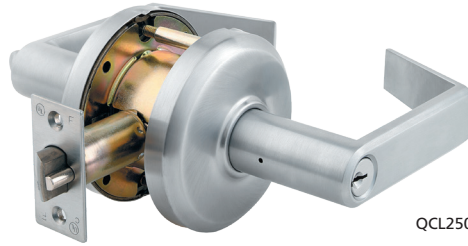


QCL150

PRODUCT #	MODEL #	FUNCTION	STYLE	FINISH	LATCH	STRIKE	CYLINDER	KEYING	LIST PRICE
QCL120E626478S	QCL120	DUMMY	E	626		478S			142.00
QCL130626SR478S	QCL130	PASSAGE	E	626	S4	478S			276.00
QCL140E626S4478S	QCL140	PRIVACY	E	626	S4	478S			334.00
QCL150E626S4478SSCKD	QCL150	ENTRY	E	626	S4	478S	SC	KD	382.00
QCL160E626S4478SSCKD	QCL160	CLASSROOM	E	626	S4	478S	SC	KD	382.00
QCL170E626S4478SSCKD	QCL170	STOREROOM	E	626	S4	478S	SC	KD	382.00
QCL151E626S4478SLC	QCL151	ENTRY SFIC	E	626	S4	478S	LC		382.00
QCL161E626S4478SLC	QCL161	CLASSROOM SFIC	E	626	S4	478S	LC		382.00
QCL171E626S4478SLC	QCL171	STOREROOM SFIC	E	626	S4	478S	LC		382.00

PRODUCT #	PART #	FINISH	DESCRIPTION	LIST PRICE
8Q01070006	BF	626	SFIC BF KEYWAY, KD PACKAGE, 6CS7BF2626. INCLUDES 1 CONTROL KEY AND 2 OPERATING KEYS.	50.00
8Q00172003	S4	626	2-3/4" BACKSET, 1-1/8" FACE, DEAD LATCH, SQUARE CORNER	16.00
8Q00574003	S4	626	2-3/4" BACKSET, 1-1/8" FACE, DEAD LATCH, SQUARE CORNER- CORRIDOR FUNCTION	16.00
8Q00166003	478S	626	4-7/8" ANSI STRIKE	8.70

STANLEY COMMERCIAL HARDWARE | QCL200 SERIES | GRADE 2 CYLINDRICAL LOCKS



QCL250

PRODUCT #	MODEL	FUNCTION	STYLE	FINISH	LATCH	STRIKE	CYLINDER	KEYING	LIST PRICE
QCL220E626478S	QCL220	DUMMY	E	626		478S			77.00
QCL230626SR478S	QCL230	PASSAGE	E	626	S4	478S			156.00
QCL240E626S4478S	QCL240	PRIVACY	E	626	S4	478S			165.00
QCL250E626S4478SSCKD	QCL250	ENTRY	E	626	S4	478S	SC	KD	194.00
QCL260E626S4478SSCKD	QCL260	CLASSROOM	E	626	S4	478S	SC	KD	194.00
QCL270E626S4478SSCKD	QCL270	STOREROOM	E	626	S4	478S	SC	KD	194.00
QCL251E626S4478SLC	QCL251	ENTRY SFIC	E	626	S4	478S	LC		194.00
QCL261E626S4478SLC	QCL261	CLASSROOM SFIC	E	626	S4	478S	LC		194.00
QCL271E626S4478SLC	QCL271	STOREROOM SFIC	E	626	S4	478S	LC		194.00

PRODUCT #	PART #	FINISH	DESCRIPTION	LIST PRICE
8Q01070006	BF	626	SFIC BF KEYWAY, KD PACKAGE, 6CS7BF2626. INCLUDES 1 CONTROL KEY AND 2 OPERATING KEYS.	50.00
8Q00187003	S4	626	2-3/4" BACKSET, 1-1/8" FACE, DEADLATCH, SQUARE CORNER	9.90
8Q00578003	S4	626	2-3/4" BACKSET, 1-1/8" FACE, DEADLATCH, SQUARE CORNER - CORRIDOR FUNCTION	9.90
8Q00189003	S8	626	2-3/8" BACKSET, 1-1/8" FACE, DEADLATCH, SQUARE CORNER	9.90
8Q00580003	S8	626	2-3/8" BACKSET, 1-1/8" FACE, DEADLATCH, SQUARE CORNER - CORRIDOR FUNCTION	9.90
8Q00166003	478S	626	4-7/8" ANSI STRIKE	8.70
8Q00165003	118F	626	T-STRIKE	5.60

STANLEY COMMERCIAL HARDWARE | QCI200 SERIES | GRADE 2 INTERCONNECTED LOCKS

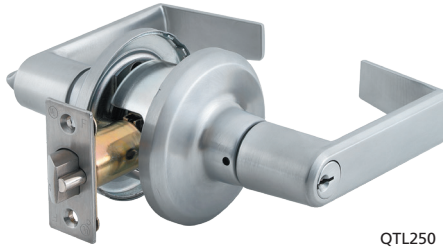


QCI230

QCI 230

PRODUCT #	MODEL #	FUNCTION	STYLE	FINISH	LATCH	STRIKE	CYLINDER	KEYING	LIST PRICE
QCI230E626NS4118FSCKD	QCI230	SINGLE LOCKING	E	626	NS4	118F	SC	KD	348.00
QCI230E626NS4118FSMTKD	QCI230	SINGLE w/ RE-KEY	E	626	NS4	118F	SMT	KD	348.00
QCI231E626NS4118FBFKD	QCI231	SINGLE LOCKING SFIC	E	626	NS4	118F	BF	KD	377.00
QCI250E626NS4118FSCKD	QCI250	DOUBLE LOCKING	E	626	NS4	118F	SC	KD	387.00
QCI251E626NS4118FLC	QCI251	DOUBLE LOCKING SFIC	E	626	NS4	118F	LC		441.00

PRODUCT #	PART #	FINISH	DESCRIPTION	LIST PRICE
8Q01070006	BF	626	SFIC BF KEYWAY, KD PACKAGE, 6CS7BF2626. INCLUDES 1 CONTROL KEY AND 2 OPERATING KEYS.	50.00
8Q00321003	S4	626	2-3/4" BACKSET, 1-1/8" FACE, INTERCONNECT DEADBOLT LATCH, SQUARE CORNER	17.00
8Q00319003	S8	626	2-3/8" BACKSET, 1-1/8" FACE, INTERCONNECT DEADBOLT LATCH, SQUARE CORNER	17.00



QTL250

PRODUCT #	MODEL #	FUNCTION	STYLE	FINISH	LATCH	STRIKE	CYLINDER	KEYING	LIST PRICE
QTL220E626	QTL220	DUMMY	E	626		118F			60.00
QTL230E626SA118F	QTL230	PASSAGE	E	626	SA	118F			119.00
QTL240E626SA118F	QTL240	PRIVACY	E	626	SA	118F			128.00
QTL250E626SA118F5CKD	QTL250	ENTRY	E	626	SA	118F	SC	KD	143.00
QTL260E626SA118F5CKD	QTL260	CLASSROOM	E	626	SA	118F	SC	KD	143.00
QTL270E626SA118F5CKD	QTL270	STOREROOM	E	626	SA	118F	SC	KD	143.00
QTL251E626SA118FLC	QTL251	ENTRY SFIC	E	626	SA	118F	LC		147.00
QTL261E626SA118FLC	QTL261	CLASSROOM SFIC	E	626	SA	118F	LC		147.00
QTL271E626SA118FLC	QTL271	STOREROOM SFIC	E	626	SA	118F	LC		147.00

PRODUCT #	PART #	FINISH	DESCRIPTION	LIST PRICE
8Q01070006	BF	626	SFIC BF KEYWAY, KD PACKAGE, 6CS7BF2626. INCLUDES 1 CONTROL KEY AND 2 OPERATING KEYS.	50.00
8Q00162003	SA	626	ADJUSTABLE DEAD LATCH, 1" FACE, SQUARE CORNER	13.00
8Q00204003	RA	626	ADJUSTABLE DEAD LATCH, 1" FACE, RADIUS CORNER	13.00



QDB180

PRODUCT #	MODEL #	FUNCTION	GRADE	FINISH	LATCH	STRIKE	CYLINDER	KEYING	LIST PRICE
QDB180626S4DBSSCKD	QDB180	SINGLE CYLINDER	1	626	S4	DBS	SC	KD	140.00
QDB181626S4DBSLC	QDB181	SINGLE CYLINDER SFIC	1	626	S4	DBS	LC		140.00
QDB280626S4DBSSCKD	QDB280	SINGLE CYLINDER	2	626	S4	DBS	SC	KD	86.00
QDB280626S4DBSSMTKD	QDB280	SINGLE CYLINDER	2	626	S4	DBS	SMT	KD	86.00
QDB281626S4DBSLC	QDB281	SINGLE CYLINDER SFIC	2	626	S4	DBS	LC		61.00
QDB284626S4DBS	QDB284	INSIDE TURN BOLT	2	626	S4	DBS			44.00
QDB285626S4DBS	QDB285	INDICATOR	2	626	S4	DBS			72.00

PRODUCT #	PART #	FINISH	DESCRIPTION	LIST PRICE
8Q01070006	BF	626	SFIC BF KEYWAY, KD PACKAGE, 6CS7BF2626. INCLUDES 1 CONTROL KEY AND 2 OPERATING KEYS.	50.00
8Q00170003	234BS	626	2-3/4" BACKSET, 1-1/8" FACE, DEADBOLT LATCH, SQUARE CORNER	18.00
8Q00168003	238BS	626	2-3/8" BACKSET, 1-1/8" FACE, DEADBOLT LATCH, SQUARE CORNER	18.00
8Q00482001	6WAL 6	626	6 WAY ADJUSTABLE DEADBOLT LATCH	19.00
8Q00164003	DBS	626	STANDARD DEADBOLT STRIKE, SQUARE CORNER	5.30
8Q00161001	DBS	626	DEADBOLT STRIKE BOX	3.00

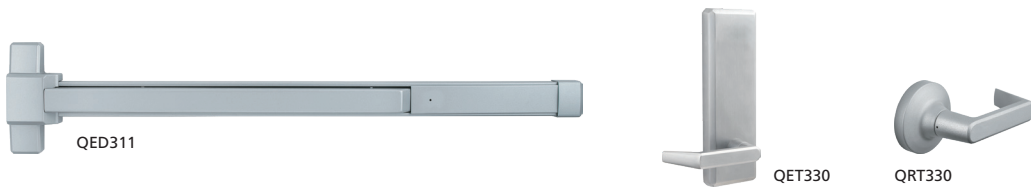
STANLEY COMMERCIAL HARDWARE | QED/QET100 SERIES | HEAVY-DUTY EXITS & TRIMS



PRODUCT #	MODEL #	FUNCTION	STYLE	FINISH	CYLINDER	KEYING	LIST PRICE
QED11136626	QED111	RIM	36"	626			1033.00
QED11336626	QED113	RIM FIRE	36"	626			1103.00
QED114367626	QED114	SVR	36" , 7'	626			1357.00
QED116367626	QED116	SVR FIRE	36" , 7'	626			1426.00
QET130E626	QET130	PASSAGE LEVER	E	626			452.00
QET160E626SCKD	QET160	KEYED LEVER (CLASSROOM)	E	626	SC	KD	510.00

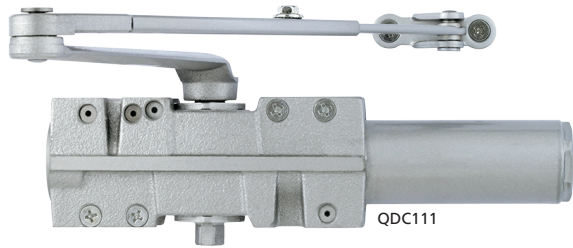
PRODUCT #	FINISH	DESCRIPTION	LIST PRICE
8Q00260003	626	8' TOP ROD FOR SVR QED114 - QED119	48.00

STANLEY COMMERCIAL HARDWARE | QED/QET300 SERIES | STANDARD-DUTY EXITS & TRIMS



PRODUCT #	MODEL #	FUNCTION	STYLE	FINISH	CYLINDER	KEYING	LIST PRICE
QED31136689	QED311	RIM	36"	689			310.00
QED31336689	QED313	RIM FIRE	36"	689			419.00
QED314367689	QED314	SVR	36" , 7'	689			509.00
QED316367689	QED316	SVR FIRE	36" , 7'	689			647.00
QET330E689	QET330	PASSAGE LEVER	E	689			202.00
QET360E689	QET360	KEYED LEVER (CLASSROOM)	E	689			262.00
QRT330689SCKD	QRT330	PASSAGE LEVER		689	SC	KD	133.00
QRT360689SCKD	QRT360	KEYED LEVER (CLASSROOM)		689	SC	KD	176.00

PRODUCT #	FINISH	DESCRIPTION	LIST PRICE
8Q00115001	689	8' TOP ROD FOR SVR QED314 - QED319	45.00



PRODUCT #	MODEL #	FUNCTION	COVER	FINISH	LIST PRICE
QDC111R689	QDC111	TRI-PACK ARM	ROUND	689	402.00
QDC111R689BF	QDC111BF	TRI-PACK ARM, BARRIER-FREE	ROUND	689	402.00
QDC112R689	QDC112	TRI-PACK ARM w/ HOLD OPEN	ROUND	689	454.00
QDC113R689	QDC113	EXTRA DUTY ARM w/ COMPRESSION STOP	ROUND	689	471.00
QDC114R689	QDC114	EXTRA DUTY ARM w/ HOLD OPEN and COMPRESSION STOP	ROUND	689	496.00
QDC115R689	QDC115	EXTRA DUTY ARM	ROUND	689	434.00
QDC117R689	QDC117	EXTRA DUTY ARM w/ STOP	ROUND	689	448.00
QDC118R689	QDC118	EXTRA DUTY ARM w/ HOLD OPEN and STOP	ROUND	689	473.00
QDC119R689	QDC119	EXTRA DUTY ARM w/ SPRING STOP	ROUND	689	552.00
QDC120R689	QDC120	EXTRA DUTY ARM w/ HOLD OPEN and SPRING STOP	ROUND	689	577.00

PRODUCT #	PART #	FINISH	DESCRIPTION	LIST PRICE
8Q01140001	M	689	QDC100 METAL COVER - RH	66.00
8Q01141001	M	689	QDC100 METAL COVER - LH	66.00
8Q00461001	P	689	QDC100 PLASTIC COVER	38.00
8Q00097001	SN	689	SEX NUTS (QTY 4)	7.30
8Q00547001	S/TAP	689	SELF-TAPPING SCREWS	18.00

PRODUCT #	MODEL #	FUNCTION	COVER	FINISH	LIST PRICE
QDC211F689	QDC211F	TRI-PACK ARM	FULL	689	277.00
QDC221S689	QDC211S	TRI-PACK ARM	SLIM	689	277.00
QDC212F689	QDC212	TRI-PACK ARM w/ HOLD OPEN	FULL	689	322.00
QDC213F689	QDC213	HEAVY DUTY ARM w/ COMPRESSION STOP	FULL	689	401.00
QDC214F689	QDC214	HEAVY DUTY ARM w/ HOLD OPEN and COMPRESSION STOP	FULL	689	424.00

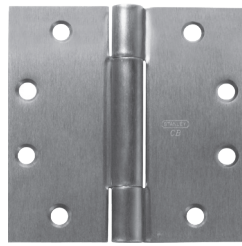
PRODUCT #	PART #	FINISH	DESCRIPTION	LIST PRICE
8Q00094001	F	689	FULL COVER	26.00
8Q00096001	S	689	SLIM COVER	26.00
8Q00097001	SN	689	SEX NUTS (QTY 4)	7.30
8Q00436001	S/TAP	689	SELF-TAPPING SCREWS	18.00

PRODUCT #	MODEL #	FUNCTION	COVER	FINISH	LIST PRICE
QDC311NC689	QDC311	TRI-PACK ARM	NO COVER	689	224.00
QDC311NC689BF	QDC311BF	TRI-PACK ARM, BARRIER-FREE	NO COVER	689	224.00
QDC312NC689	QDC312	TRI-PACK ARM w/ HOLD OPEN	NO COVER	689	265.00
QDC313NC689	QDC313	HEAVY DUTY ARM w/ COMPRESSION STOP	NO COVER	689	342.00
QDC314NC689	QDC314	HEAVY DUTY ARM w/ HOLD OPEN and COMPRESSION STOP	NO COVER	689	363.00

PRODUCT #	PART #	FINISH	DESCRIPTION	LIST PRICE
8Q00095001	F	689	FULL COVER	26.00
8Q00097001	SN	689	SEX NUTS (QTY 4)	7.30
8Q00436001	S/TAP	689	SELF-TAPPING SCREWS	18.00



CB179



CB1900R



2060R

PRODUCT #	CLASS	DESCRIPTION	MATERIAL	SIZE	FINISH	OPTION	LIST PRICE	UNIT
458441	CB179	Standard Weight Concealed Bearing	Steel	4.5" x 4.5"	26D		18.94	
458431	CB179	Standard Weight Concealed Bearing	Steel	4.5" x 4.5"	P		15.22	
458853	CB179	Standard Weight Concealed Bearing	Steel	4.5" x 4.5"	26D	NRP	21.90	
458851	CB179	Standard Weight Concealed Bearing	Steel	4.5" x 4.5"	P	NRP	18.19	
451676	CB168	Heavy Weight Concealed Bearing	Steel	4.5" x 4.5"	26D		40.87	

068441	FBB179	Standard Weight Ball Bearing	Steel	4.5" x 4.5"	26D		15.29	
068431	FBB179	Standard Weight Ball Bearing	Steel	4.5" x 4.5"	P		13.05	
068436	FBB179	Standard Weight Ball Bearing	Steel	4.5" x 4.5"	3		18.28	
068381	FBB179	Standard Weight Ball Bearing	Steel	4.5" x 4.5"	10		14.17	
067583	FBB179	Standard Weight Ball Bearing	Steel	4.5" x 4.5"	10B		18.28	
068438	FBB179	Standard Weight Ball Bearing	Steel	4.5" x 4.5"	26		18.28	
068853	FBB179	Standard Weight Ball Bearing	Steel	4.5" x 4.5"	26D	NRP	18.28	
068851	FBB179	Standard Weight Ball Bearing	Steel	4.5" x 4.5"	P	NRP	16.41	
061676	FBB168	Heavy Weight Ball Bearing	Steel	4.5" x 4.5"	26D		35.08	
061684	FBB168	Heavy Weight Ball Bearing	Steel	4.5" x 4.5"	26D	NRP	38.43	
061746	FBB168	Heavy Weight Ball Bearing	Steel	5" x 4.5"	26D		38.43	

040822	FBB191	Standard Weight Ball Bearing	Stainless Steel	4.5" x 4.5"	32D		42.17	
040116	FBB191	Standard Weight Ball Bearing	Stainless Steel	4.5" x 4.5"	32D	NRP	45.52	
044783	FBB199	Heavy Weight Ball Bearing	Stainless Steel	4.5" x 4.5"	32D		67.51	

044786	FBB199	Heavy Weight Ball Bearing	Stainless Steel	4.5" x 4.5"	32D	NRP	68.45	
050484	F179	Standard Weight Plain Bearing	Steel	3.5" x 3.5"	26D		6.11	
050549	F179	Standard Weight Plain Bearing	Steel	4" x 4"	26D		8.16	
050038	F179	Standard Weight Plain Bearing	Steel	4.5" x 4.5"	26D		8.53	
050029	F179	Standard Weight Plain Bearing	Steel	4.5" x 4.5"	P		5.61	
050073	F179	Standard Weight Plain Bearing	Steel	4.5" x 4.5"	26D	NRP	11.87	
050068	F179	Standard Weight Plain Bearing	Steel	4.5" x 4.5"	P	NRP	8.90	EA

PRODUCT #	CLASS	DESCRIPTION	MATERIAL	SIZE	FINISH	OPTION	LIST PRICE	UNIT
940105	CB1900R	Standard Weight Concealed Bearing	Steel	4.5" x 4.5"	P		15.21	
940139	CB1900R	Standard Weight Concealed Bearing	Steel	4.5" x 4.5"	26D	NRP	21.90	
940136	CB1900R	Standard Weight Concealed Bearing	Steel	4.5" x 4.5"	P	NRP	18.19	
940108	CB1900R	Standard Weight Concealed Bearing	Steel	4.5" x 4.5"	26D		18.94	
950010	CB1901R	Heavy Weight Concealed Bearing	Steel	4.5" x 4.5"	26D		40.48	EA

PRODUCT #	CLASS	DESCRIPTION	MATERIAL	SIZE	FINISH	OPTION	LIST PRICE	UNIT
420939	2060R	Spring Hinge	Steel	4.5" x 4.5"	26D		27.37	
420935	2060R	Spring Hinge	Steel	4.5" x 4.5"	P		20.25	EA

PRODUCT #	CLASS	DESCRIPTION	MATERIAL	SIZE	FINISH	OPTION	LIST PRICE	UNIT
060352	CEFB179-54	Standard Weight Concealed Conductor Hinge 4-wire	Steel	4.5" x 4.5"	26D		150.02	EA

dormakaba 

BEST  **phi** **STANLEY**
dormakaba Group PRECISION